

RNP APCH REQUIRED

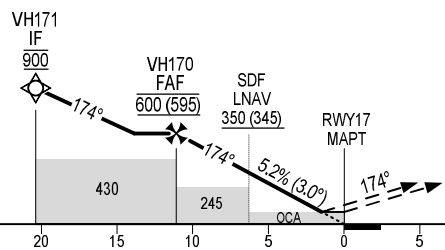
NOTE: BARO-VNAV NOT AUTHORIZED BELOW 0°C.

USAGE CONDITION: THIS PROCEDURE IS ONLY USED IN CASE OF NO MILITARY FLIGHT OPERATION IN RELATED AREAS OR HAVING COMPLETED COORDINATION BETWEEN CIVIL AVIATION AND MILITARY.

KILOMETRES TO NEXT WPT	RWY17	1.2	3	5	7	9	11.1
ALT		85	175	280	385	490	600

MISSED APPROACH:
CLIMB ON COURSE 174° TO 150 m, TURN LEFT TO BUXEN AT 900 m. JOIN HOLDING PATTERN OR FOLLOW VINH TWR INSTRUCTIONS.

TRANSITION ALTITUDE 2750



KILOMETRES TO/FM THR RWY 17	25	20	15	10	5	0	5	10
-----------------------------	----	----	----	----	---	---	---	----

OCA(H)	A	B	C	D
LNAV/VNAV	85 (80)			
LNAV	100 (94)			
CIRCLING	210 (204)	390 (384)	430 (424)	

FAF - MAPT: 11.1 km

GS	km/h	130	170	210	250	290
RATE OF DESCENT FAF-MAPT 3.0° (5.2%)	m/s	1.9	2.5	3.0	3.6	4.2