

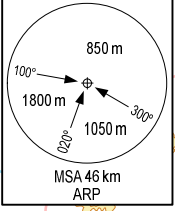
**STANDARD ARRIVAL CHART - INSTRUMENT (STAR) - ICAO**

**TRANSITION ALTITUDE**  
2750 m

**TWR: 118.3**

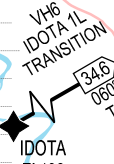
**NGHE AN/VINH DOM (VTVH)  
RNAV RWY 35  
KAMSU 1L, GUKAL 1L, DOMPU 1L**

105°30'E 105°45'E 108°00'E



ELEV, ALT, HGT IN METRES  
DIST IN KILOMETRES  
BRG ARE MAG  
VAR 1°W

**REQUIRED:**  
1. RNAV 1 (GNSS)  
2. ATS SURVEILLANCE



**GUKAL** GUKAL 1L  
086° TF

39.2

**XIMSO**  
2750

**VH202**  
2450

MAX IAS  
410 km/h

**VIGAS**  
1500

101° TF

**VH747**  
8.3

**VH616**  
2150

129° TF

**VH737**  
8.3

MAX IAS  
365 km/h

6.5

**VH26**  
6.5

**XODIS IAF**  
1500

205° TF

**VH636**  
6.5

**TR**  
13.0

298° TF

**VH646**  
6.5

**DAKOD**  
2150

13.0

**VH717**  
1500

MAX IAS  
365 km/h

32° TF

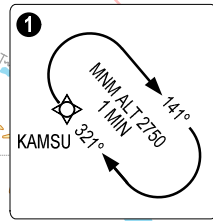
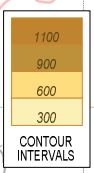
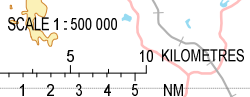
**VH653**  
2750

**KAMSU 1L**  
18.0 TF

**KAMSU**  
2750

GUKAL 1L, DOMPU 1L: MAX IAS 390 km/h;  
KAMSU 1L: MAX IAS 365 km/h.

**USAGE CONDITION:** THESE PROCEDURES AND TRACKS ARE ONLY USED IN CASE OF NO MILITARY OPERATION FM THO XUAN AERODROME IN RELATED AREAS OR HAVING COMPLETED COORDINATION BETWEEN CIVIL AVIATION AND MILITARY.



19° 15' N  
19° 00' N  
18° 45' N  
18° 30' N  
18° 15' N