

STANDARD ARRIVAL CHART -
INSTRUMENT (STAR) - ICAO

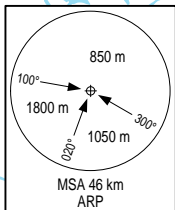
TRANSITION ALTITUDE
2750 m

TWR: 118.3

NGHE AN/VINH DOM (VVVH)
RNP RWY 35
KAMSU 1K, CAURO 1K,
GUKAL 1K, DOMPU 1K

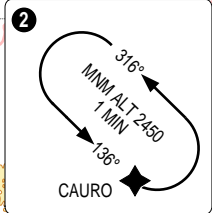
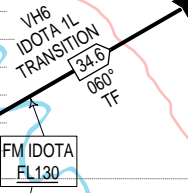
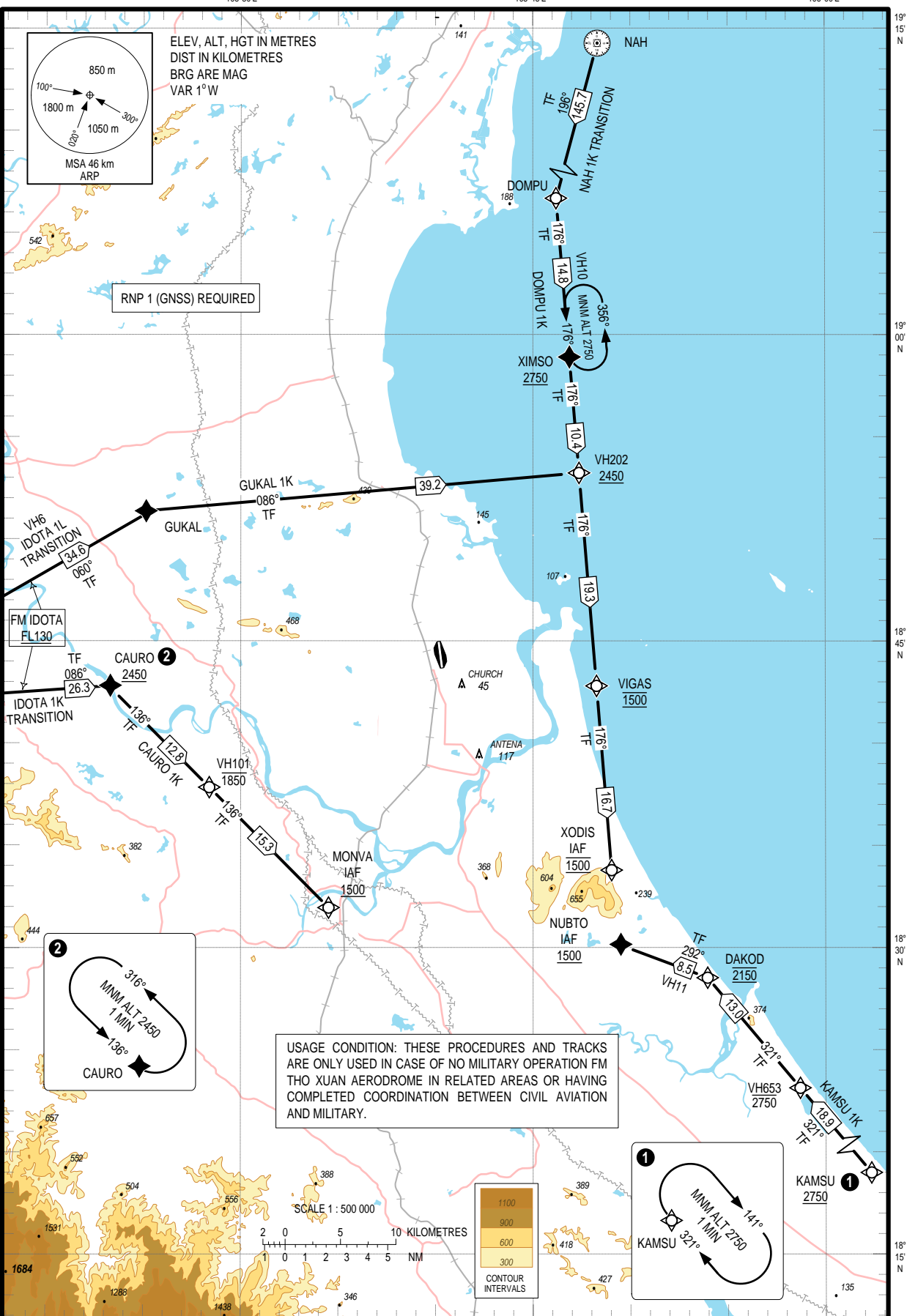
105°30'E

106°00'E

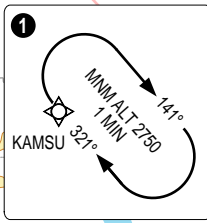
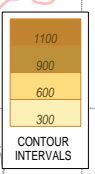
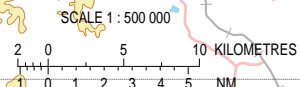


ELEV, ALT, HGT IN METRES
DIST IN KILOMETRES
BRG ARE MAG
VAR 1° W

RNP 1 (GNSS) REQUIRED



USAGE CONDITION: THESE PROCEDURES AND TRACKS
ARE ONLY USED IN CASE OF NO MILITARY OPERATION FM
THO XUAN AERODROME IN RELATED AREAS OR HAVING
COMPLETED COORDINATION BETWEEN CIVIL AVIATION
AND MILITARY.



19° 15' N
19° 00' N
18° 45' N
18° 30' N
18° 15' N