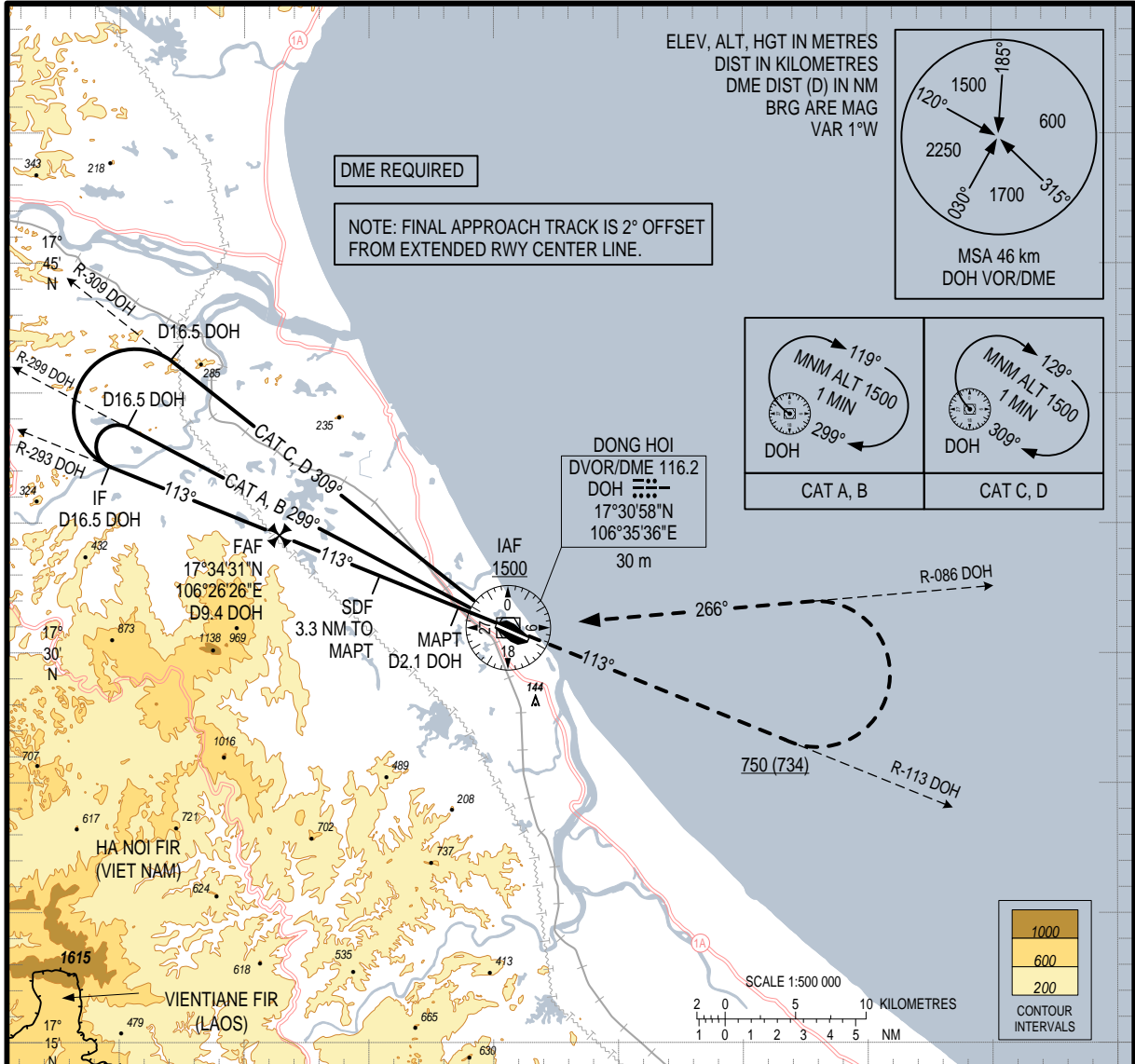


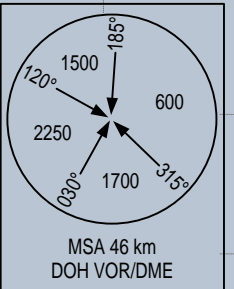
106°30'E

106°45'E

107°00'E

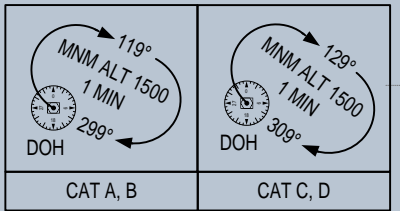


ELEV, ALT, HGT IN METRES
DIST IN KILOMETRES
DME DIST (D) IN NM
BRG ARE MAG
VAR 1°W



DME REQUIRED

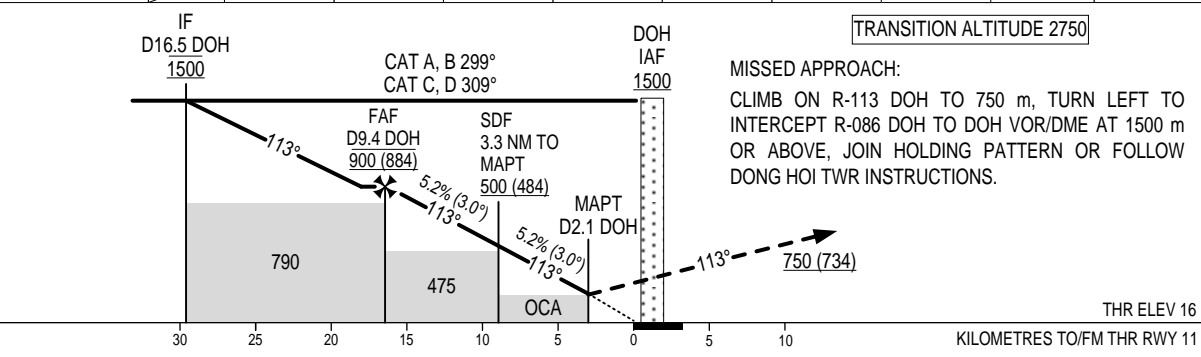
NOTE: FINAL APPROACH TRACK IS 2° OFFSET FROM EXTENDED RWY CENTER LINE.



DONG HOI
DVOR/DME 116.2
DOH \equiv
17°30'58"N
106°35'36"E



DME DISTANCE	DOH	2.1	3	4	5	6	7	8	9	9.4
ALTITUDE (5.2%)		185	275	370	470	565	665	760	860	900



TRANSITION ALTITUDE 2750

MISSED APPROACH:
CLIMB ON R-113 DOH TO 750 m, TURN LEFT TO INTERCEPT R-086 DOH TO DOH VOR/DME AT 1500 m OR ABOVE, JOIN HOLDING PATTERN OR FOLLOW DONG HOI TWR INSTRUCTIONS.

THR ELEV 16

KILOMETRES TO/FM THR RWY 11

OCA (H)	A	B	C	D
STRAIGHT-IN APPROACH	185 (167)			
CIRCLING	210 (192)		265 (247)	

GS	km/h	100	150	200	250	300
FAF-MAPT 7.4 NM	min:s	8:11	5:28	4:06	3:17	2:44
RATE OF DESCENT	m/s	1.5	2.2	2.9	3.6	4.4

CIRCLING IS ONLY IN THE NORTH OF RWY