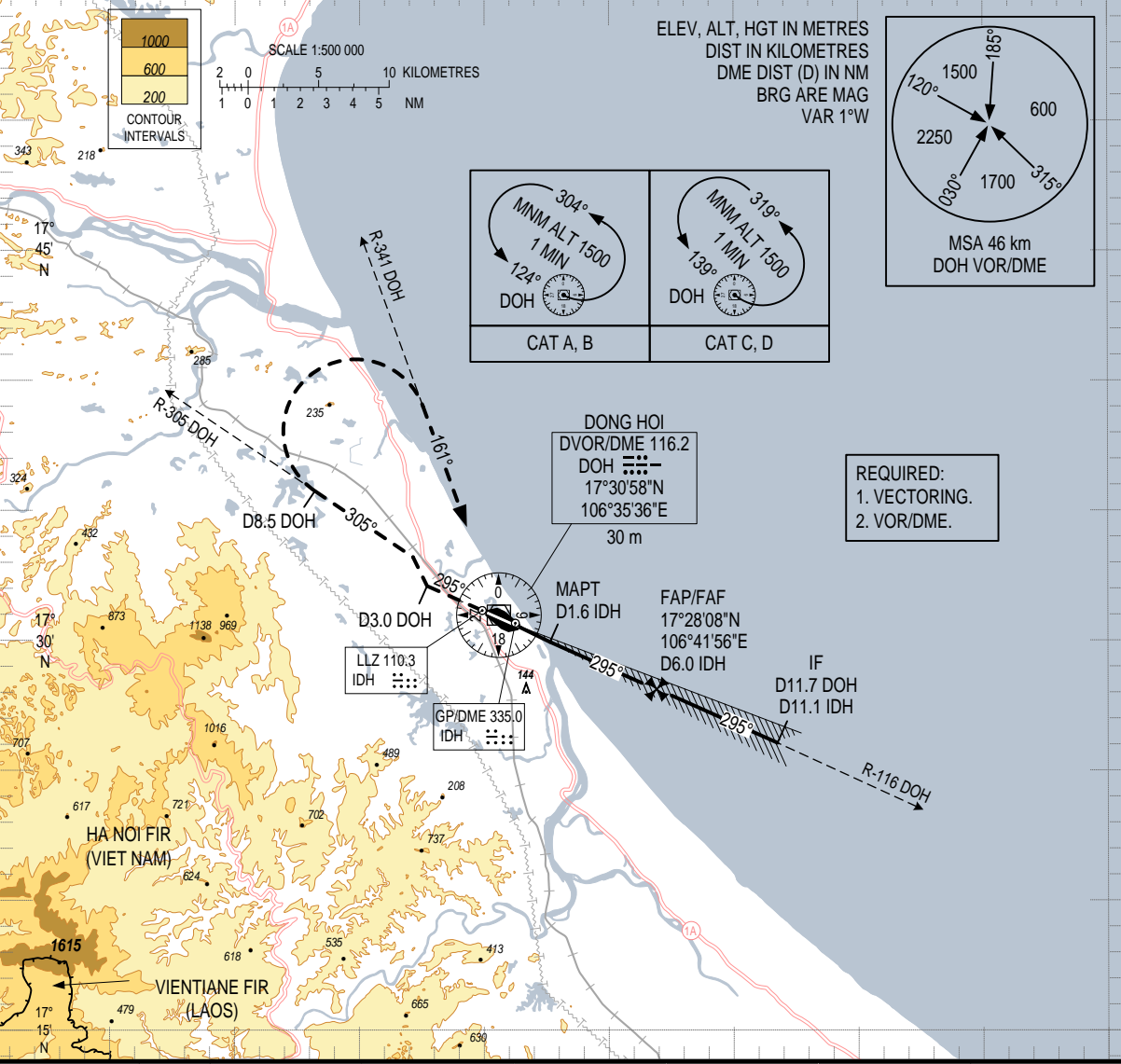


106°30'E

106°45'E

107°00'E

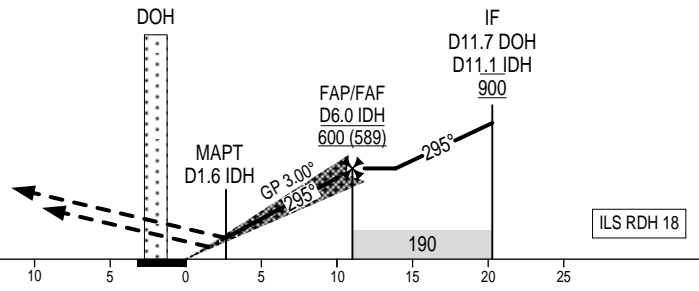


REQUIRED:
1. VECTORING.
2. VOR/DME.

DME DISTANCE	IDH	1.6	2	3	4	5	6
ALTITUDE (3.00°)		170	205	305	400	495	600

TRANSITION ALTITUDE 2750

MISSED APPROACH:
 MAINTAIN FINAL APPROACH TRACK TO D3.0 DOH,
 TURN RIGHT TO INTERCEPT R-305 DOH TO D8.5 DOH,
 TURN RIGHT TO INTERCEPT R-341 DOH TO DOH VOR/
 DME AT 1500 m OR ABOVE, JOIN HOLDING PATTERN
 OR FOLLOW DONG HOI TWR INSTRUCTIONS.
 MNM CLIMB GRADIENT 3.5% FOR CAT A, B.



OCA (H)		A	B	C	D
STRAIGHT-IN APPROACH	CAT I	84 (73)	87 (76)	90 (79)	93 (82)
	GP INOP	170 (159)			
CIRCLING		210 (192)		265 (247)	

GS	km/h	100	150	200	250	300
FAF-MAPT 4.4 NM	min:s	4:55	3:17	2:28	1:58	1:38
RATE OF DESCENT	m/s	1.5	2.2	2.9	3.6	4.4

CIRCLING IS ONLY IN THE NORTH OF RWY