

106° 20'E

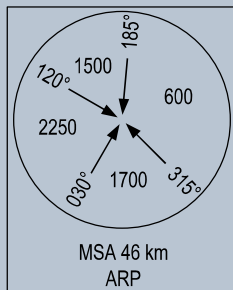
106° 30'E

106° 40'E

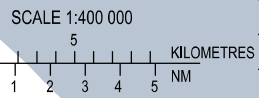
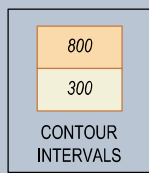
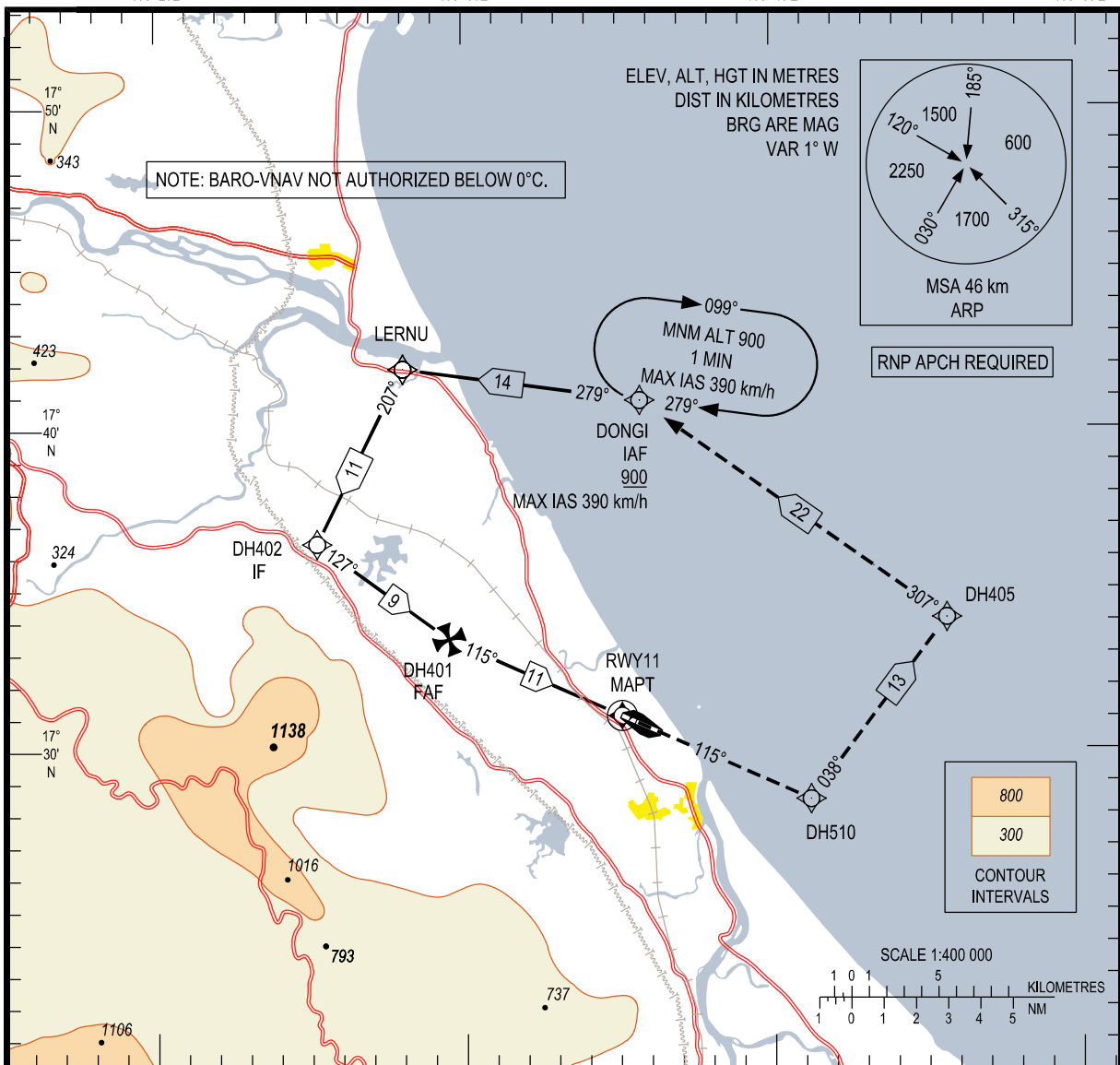
106° 50'E

NOTE: BARO-VNAV NOT AUTHORIZED BELOW 0°C.

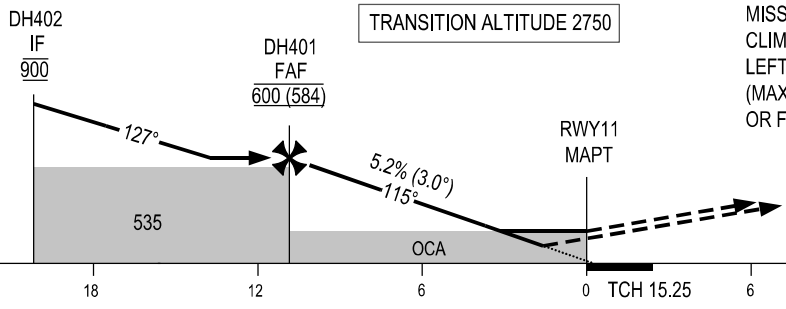
ELEV, ALT, HGT IN METRES
DIST IN KILOMETRES
BRG ARE MAG
VAR 1° W



RNP APCH REQUIRED



KILOMETRES TO NEXT WPT	RWY11	2.9	4.0	6.0	8.0	10.8
ALT		185	245	345	450	600



MISSED APPROACH:
CLIMB ON COURSE 115° TO DH510, TURN LEFT TO DH405 AND HOLDING AT 900 m (MAX IAS 390 km/h). JOIN HOLDING PATTERN OR FOLLOW DONG HOI TWR INSTRUCTIONS.

THR ELEV 16
KILOMETRES TO/FM THR RWY 11

OCA (H)	A	B	C	D
LNAV/VNAV	115 (99)			
LNAV	185 (167)			
CIRCLING	210 (192)		265 (247)	

GS	km/h	150	200	250	300
RATE OF DESCENT	m/s	2.2	2.9	3.6	4.4

CIRCLING IS ONLY IN THE NORTH OF RWY

SEE THE NEXT PAGES FOR CODING DATA.