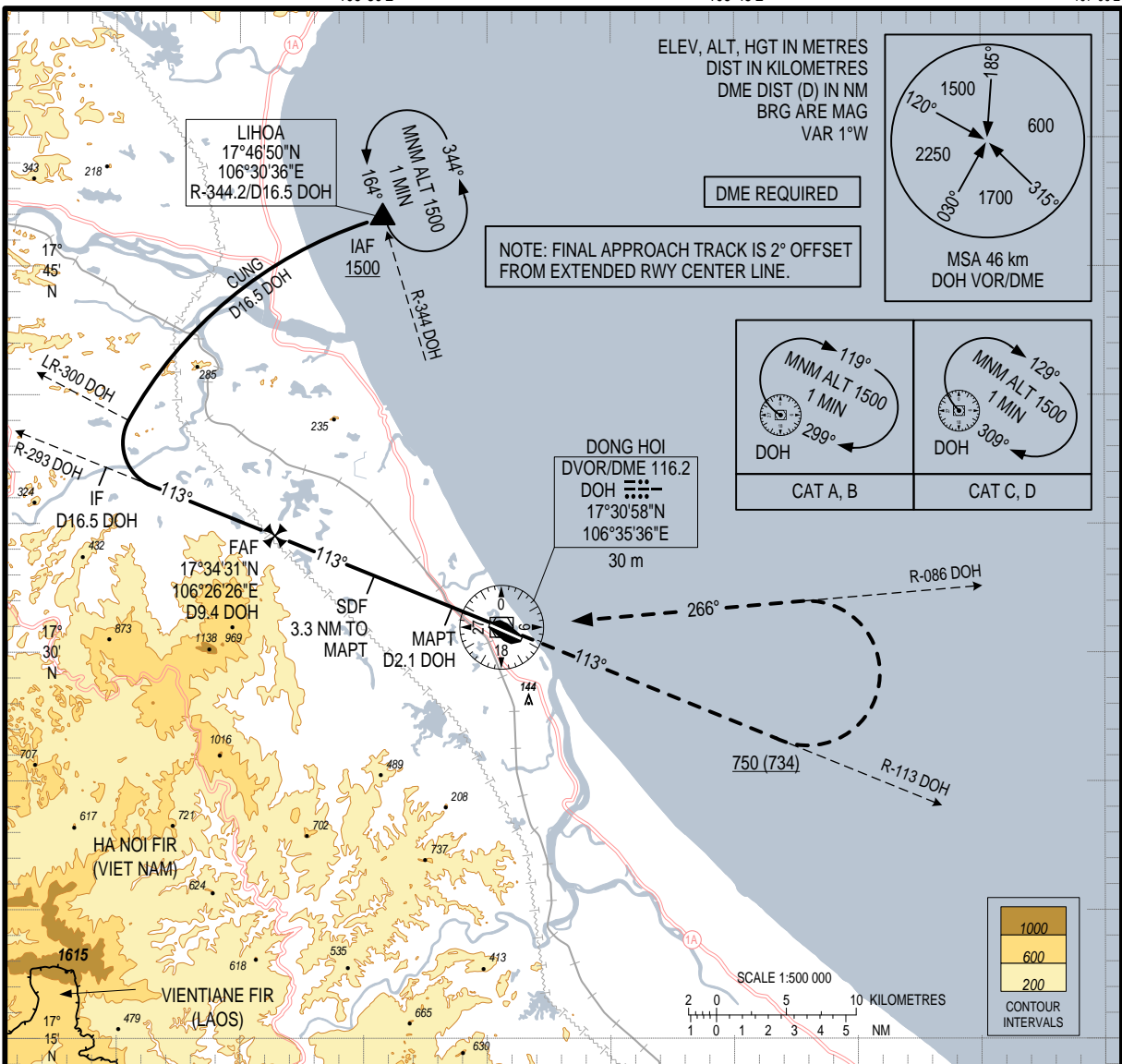


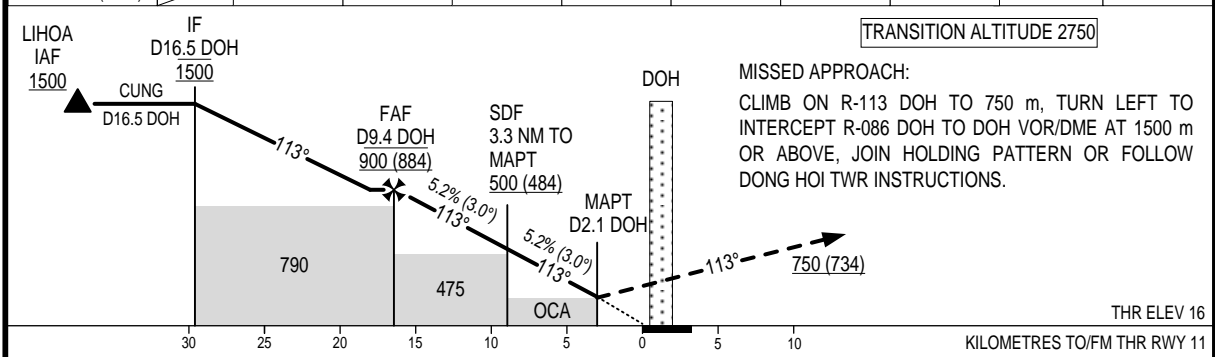
106°30'E

106°45'E

107°00'E



DME DISTANCE	DOH	2.1	3	4	5	6	7	8	9	9.4
ALTITUDE (5.2%)		185	275	370	470	565	665	760	860	900



OCA (H)	A	B	C	D	GS	km/h	100	150	200	250	300
STRAIGHT-IN APPROACH	185 (167)				FAF-MAPT 7.4 NM	min:s	8:11	5:28	4:06	3:17	2:44
CIRCLING	210 (192)		265 (247)		RATE OF DESCENT	m/s	1.5	2.2	2.9	3.6	4.4

CIRCLING IS ONLY IF THE NORTH OF RWY