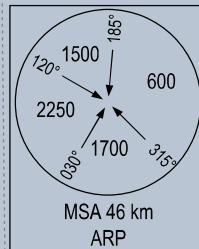


ELEV, ALT IN METRES
DIST IN KILOMETRES
BRG ARE MAG
VAR 1° W

106° 30' E

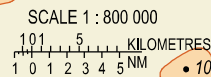
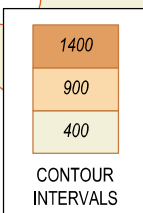
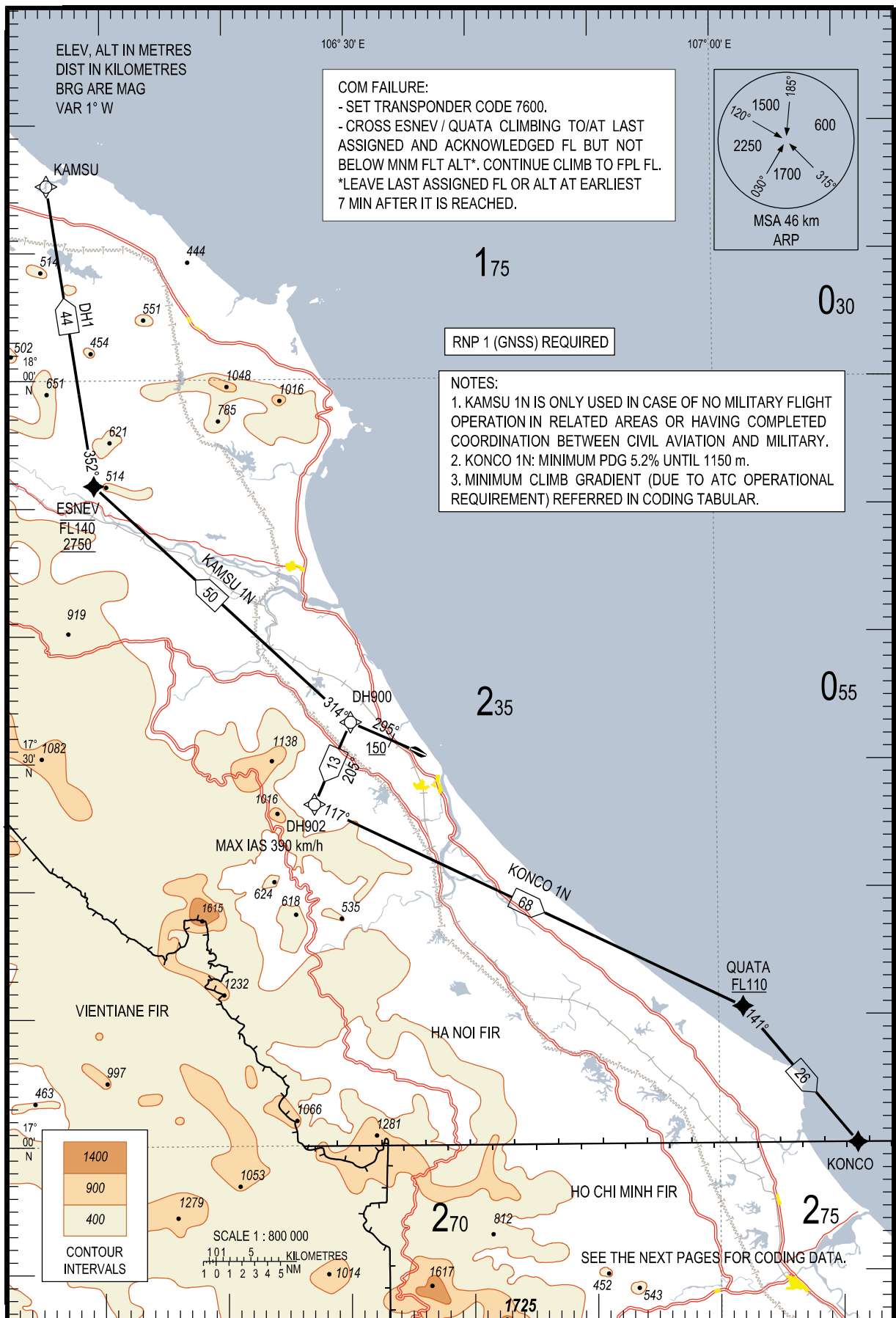
107° 00' E

COM FAILURE:
- SET TRANSPONDER CODE 7600.
- CROSS ESNEV / QUATA CLIMBING TO/AT LAST
ASSIGNED AND ACKNOWLEDGED FL BUT NOT
BELOW MNM FLT ALT*. CONTINUE CLIMB TO FPL FL.
*LEAVE LAST ASSIGNED FL OR ALT AT EARLIEST
7 MIN AFTER IT IS REACHED.



RNP 1 (GNSS) REQUIRED

NOTES:
1. KAMSU 1N IS ONLY USED IN CASE OF NO MILITARY FLIGHT
OPERATION IN RELATED AREAS OR HAVING COMPLETED
COORDINATION BETWEEN CIVIL AVIATION AND MILITARY.
2. KONCO 1N: MINIMUM PDG 5.2% UNTIL 1150 m.
3. MINIMUM CLIMB GRADIENT (DUE TO ATC OPERATIONAL
REQUIREMENT) REFERRED IN CODING TABULAR.



SEE THE NEXT PAGES FOR CODING DATA.