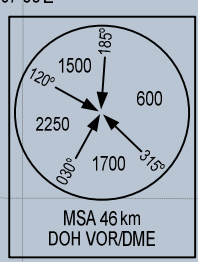


**1**  
KAMSU  
18°15'13"N  
106°05'36"E  
R-140.8/D37.6 VIN

**1**  
DENGA  
17°59'34"N  
106°19'22"E  
R-140.8/D57.9 VIN

**1**  
VINH  
DVOR/DME 113.1  
VIN  $\bullet\bullet\bullet$  -  
18°44'03"N  
105°40'06"E  
30 m

ELEV. ALT IN METRES  
DIST IN KILOMETRES  
DME DIST (D) IN NM  
BRG ARE MAG  
VAR 1° W



**RWY 29**

1. KAMSU 1U: CLIMB ON R-295 DOH TO D5.0 DOH, TURN RIGHT HEADING 031° (MAX IAS 465 km/h) TO INTERCEPT R-344 DOH TO LIHOA, INTERCEPT R-141 VIN TO DENGA AND KAMSU AT 2750 m OR ABOVE.
2. KONCO 1U: CLIMB ON R-295 DOH TO D5.0 DOH, TURN RIGHT TO DOH VORDME (MAX IAS 465 km/h), INTERCEPT R-123 DOH TO KIGIA AT 2750 m OR ABOVE, INTERCEPT R-321 HUE TO QUATA AND KONCO.

LIHOA  
17°46'50"N  
106°30'36"E  
R-344.2/D16.5 DOH

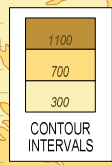
DONG HOI  
DVOR/DME 116.2  
DOH  $\bullet\bullet\bullet$  -  
17°30'58"N  
106°35'36"E  
30 m

**2**  
PHU BAI  
DVOR/DME 115.8  
HUE  $\bullet\bullet\bullet$  -  
16°24'08"N  
107°42'06"E  
30 m

KIGIA  
17°19'52"N  
106°54'16"E  
R-122.7/D21.0 DOH

**2**  
QUATA  
17°10'42"N  
107°01'59"E  
R-321.4/D60.3 HUE

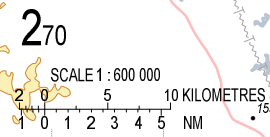
**2**  
KONCO  
17°00'00"N  
107°11'13"E  
R-321.4/D46.4 HUE



VIENTIANE FIR (LAOS)

HA NOI FIR (VIET NAM)

HO CHI MINH FIR (VIET NAM)



275