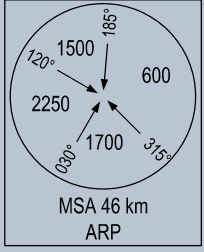


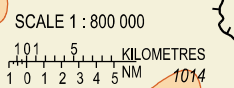
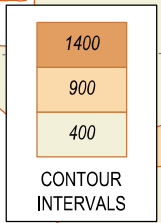
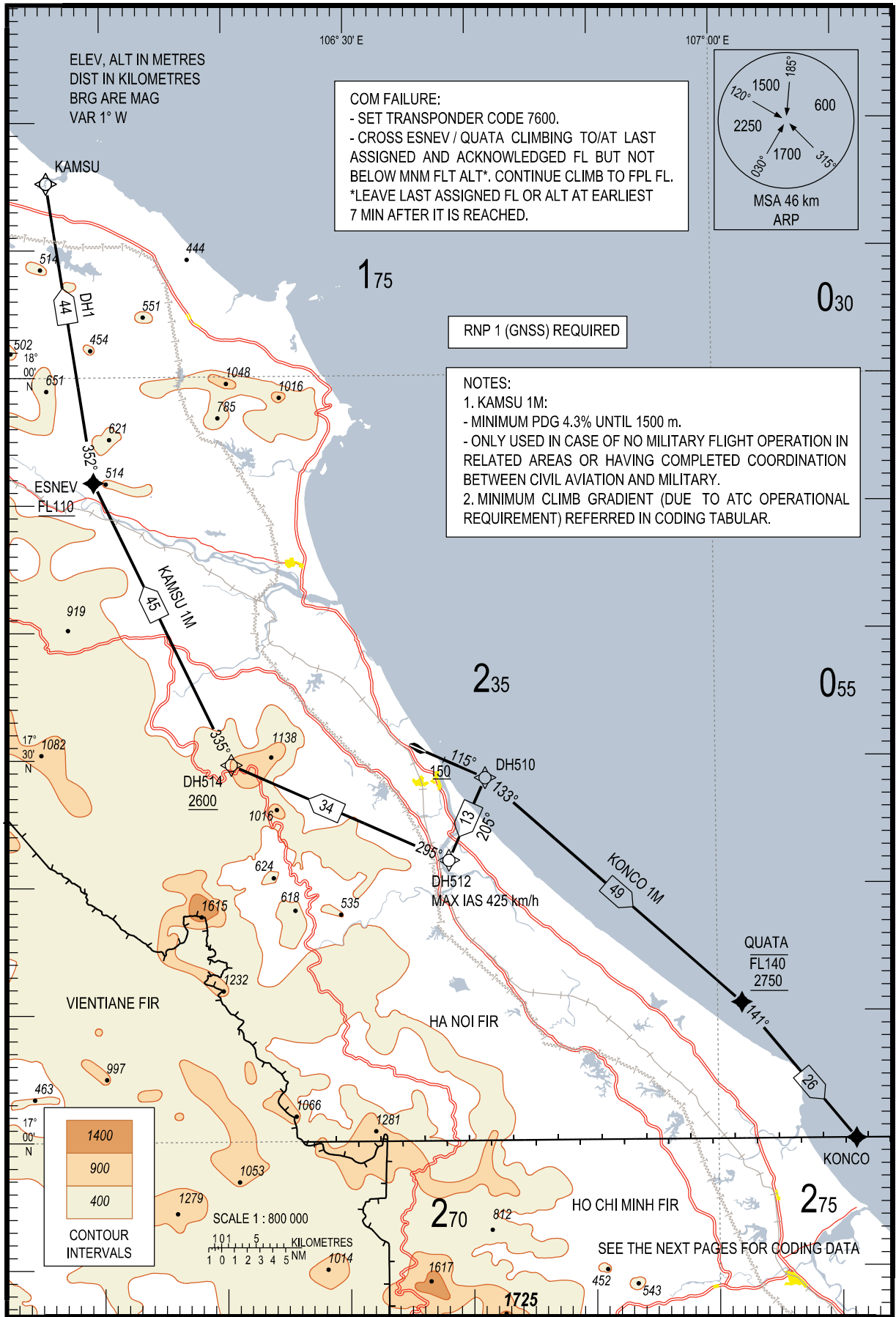
ELEV, ALT IN METRES
DIST IN KILOMETRES
BRG ARE MAG
VAR 1° W

COM FAILURE:
- SET TRANSPONDER CODE 7600.
- CROSS ESNEV / QUATA CLIMBING TO/AT LAST ASSIGNED AND ACKNOWLEDGED FL BUT NOT BELOW MNM FLT ALT*. CONTINUE CLIMB TO FPL FL.
*LEAVE LAST ASSIGNED FL OR ALT AT EARLIEST 7 MIN AFTER IT IS REACHED.



RNP 1 (GNSS) REQUIRED

NOTES:
1. KAMSU 1M:
- MINIMUM PDG 4.3% UNTIL 1500 m.
- ONLY USED IN CASE OF NO MILITARY FLIGHT OPERATION IN RELATED AREAS OR HAVING COMPLETED COORDINATION BETWEEN CIVIL AVIATION AND MILITARY.
2. MINIMUM CLIMB GRADIENT (DUE TO ATC OPERATIONAL REQUIREMENT) REFERRED IN CODING TABULAR.



QUATA
FL140
2750

SEE THE NEXT PAGES FOR CODING DATA