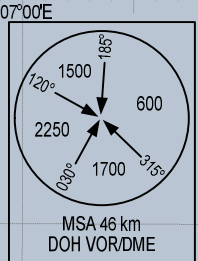


**KAMSU**  
18°15'13"N  
106°05'36"E  
R-140.8/D37.6 VIN

**DENGA**  
17°59'34"N  
106°19'22"E  
R-140.8/D57.9 VIN

**VINH**  
DVOR/DME 113.1  
VIN  
18°44'03"N  
105°40'06"E  
30 m

ELEV. ALT IN METRES  
DIST IN KILOMETRES  
DME DIST (D) IN NM  
BRG ARE MAG  
VAR 1° W



**RWY 11**

1. KAMSU 1T: CLIMB TO 150 m ON R-115 DOH, TURN LEFT HEADING 270° (MAX IAS 425 km/h) TO INTERCEPT R-344 DOH TO LIHOA, INTERCEPT R-141 VIN TO DENGA AT 2750 m OR ABOVE, CONTINUE ON R-141 VIN TO KAMSU.
2. KONCO 1T: CLIMB TO 150 m ON R-115 DOH, TURN RIGHT TO INTERCEPT R-123 DOH TO KIGIA, INTERCEPT R-321 HUE TO QUATA AND KONCO AT 2750 m OR ABOVE.

**LIHOA**  
17°46'50"N  
106°30'36"E  
R-344.2/D16.5 DOH

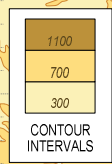
**DONG HOI**  
DVOR/DME 116.2  
DOH  
17°30'58"N  
106°35'36"E  
30 m

**PHU BAI**  
DVOR/DME 115.8  
HUE  
16°24'08"N  
107°42'06"E  
30 m

**KIGIA**  
17°19'52"N  
106°54'16"E  
R-122.7/D21.0 DOH

**QUATA**  
17°10'42"N  
107°01'59"E  
R-321.4/D60.3 HUE

**KONCO**  
17°00'00"N  
107°11'13"E  
R-321.4/D46.4 HUE



HA NOI FIR  
(VIET NAM)

HO CHI MINH FIR  
(VIET NAM)

VIENTIANE FIR  
(LAOS)



275