

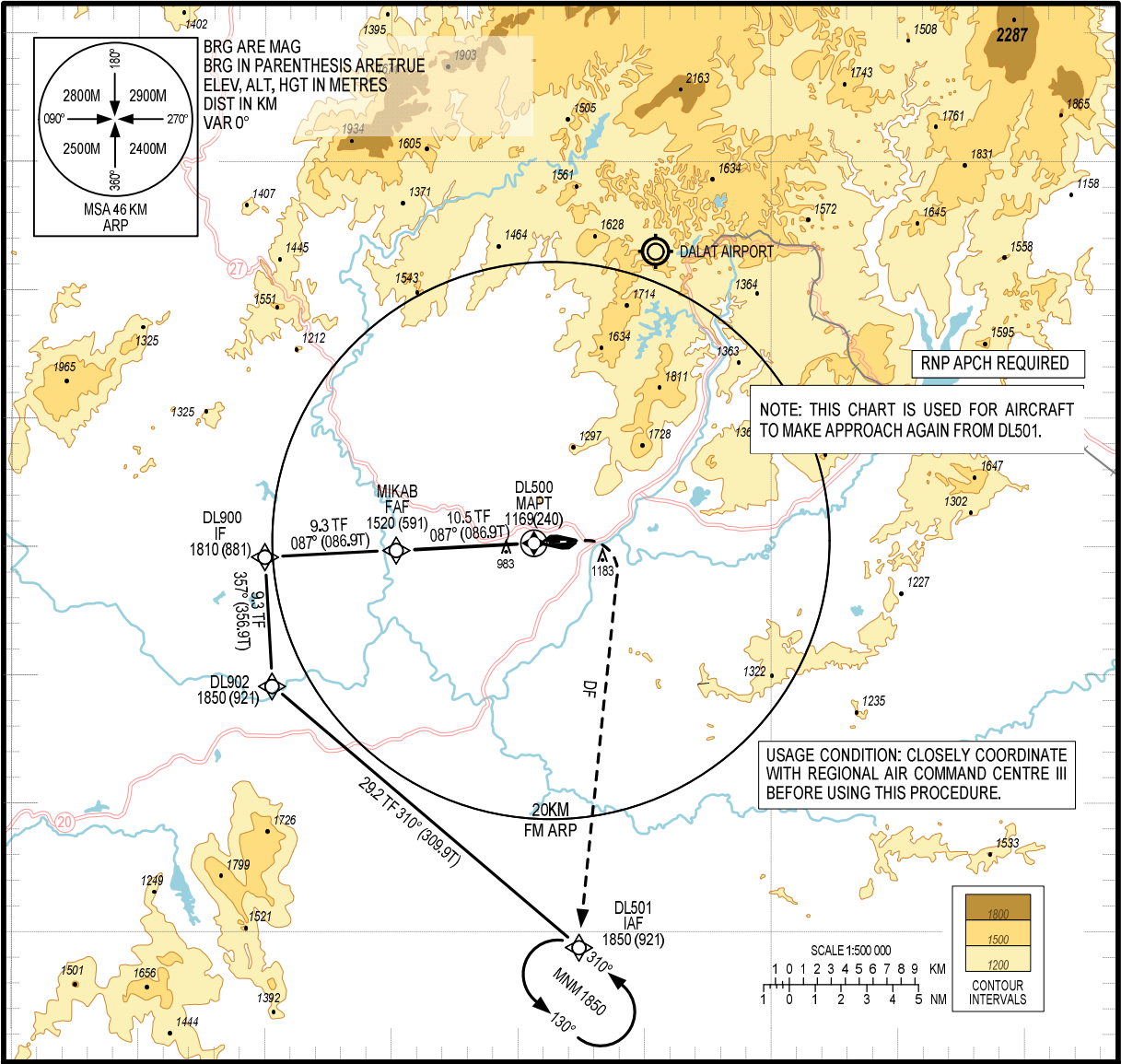
108°00'E 108°30'E

12° 00' N

12° 00' N

11° 30' N

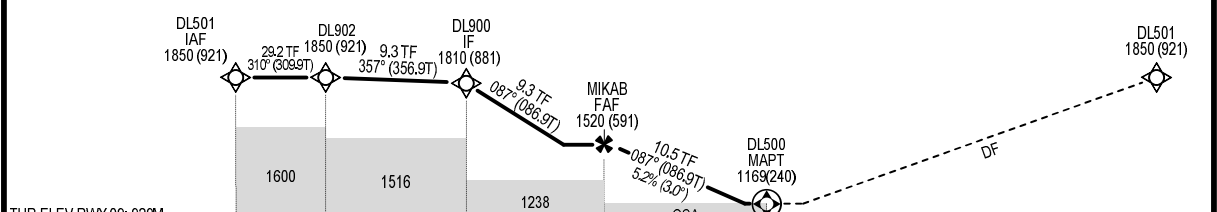
11° 30' N



108°00'E 108°30'E

MISSED APPROACH:
TURN RIGHT DIRECT TO DL501 AT 1850M, JOIN HOLDING PATTERN OR FOLLOW LIEN KHUONG TWR INSTRUCTIONS.

TRANSITION ALTITUDE 3050M



THR ELEV RWY 09: 929M
KM FROM/TO THR RWY 09

DISTANCE FROM FAF/FAP TO MAPT = 10.5KM

OCA (H)				
CAT	A	B	C	D
RNAV	1169 (240)			
CIRCLING	1500 (538)		1900 (938)	

SPEED (GS)	KMH	100	150	200	250	300	
		TIME	M:S	6:18	4:12	3:09	2:31
RATE OF DESCENT		M:S	1.46	2.18	2.91	3.64	4.37
DISTANCE TO THR 09		RWY 09	3.4	4	6	8	11.0
ALT			1119	1152	1256	1360	1520

CIRCLING IS ONLY IN THE SOUTH OF RWY