

108°00'E

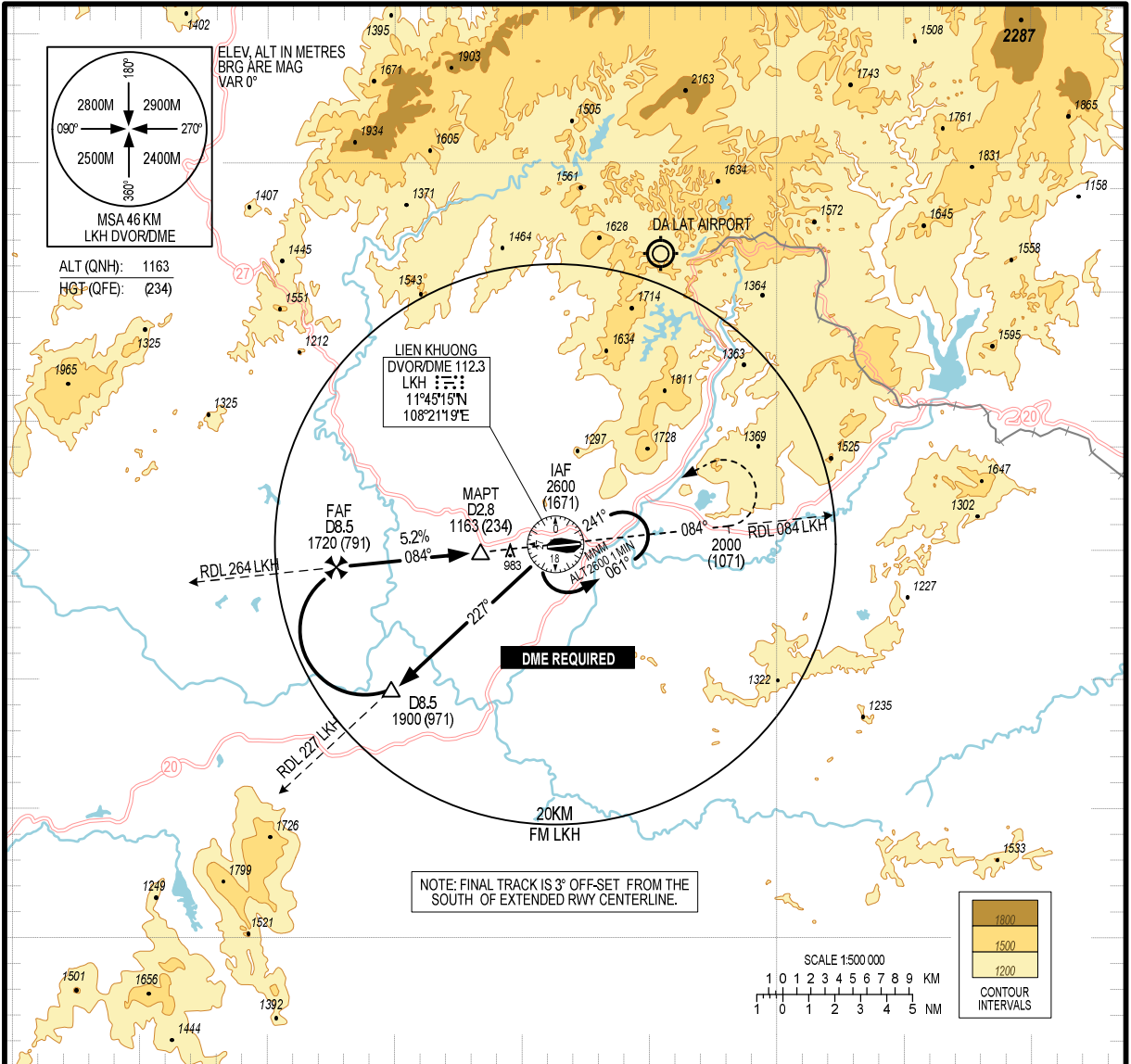
108°30'E

12° 00' N

12° 00' N

11° 30' N

11° 30' N



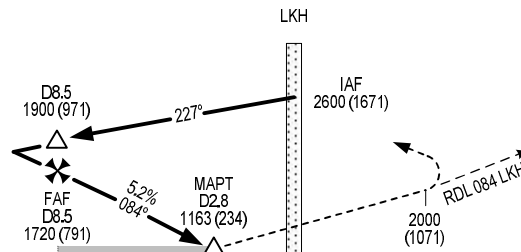
108°00'E

108°30'E

TRANSITION FL110

MISSED APPROACH:

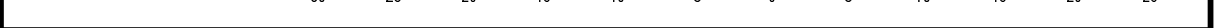
MAINTAIN PRESENT HEADING, CLIMB TO 2600M(1671M) UNTIL PASSING 2000M(1071M) ON RDL 084 LKH, TURN LEFT TO LKH TO JOIN HOLDING PATTERN AT LKH OR FOLLOW ATC'S INSTRUCTIONS.



ALT (QNH): 1163
HGT (QFE): (234)

THR ELEV 929M

KM TO/FROM THR RWY 09



FAF-MAPT 5.7NM (10556M)

OCA (H)	D
STRAIGHT-IN APCH	1163 (234)
CIRCLING	1900 (938)

CIRCLING ONLY IN THE SOUTH OF RWY AND IN DAYTIME

GROUND SPEED		KMH						
TIME		MINS						
RATE OF DESCENT		M/S						
DISTANCE TO LKH	DME	8.5	7.0	6.0	5.0	4.0	3.5	2.8
HGT (QFE)	M	791	641	546	450	354	306	234
		200	225	250	275	300		
		3:10	2:49	2:32	2:18	2:07		
		2.9	3.3	3.7	4.0	4.4		