

108°00'E

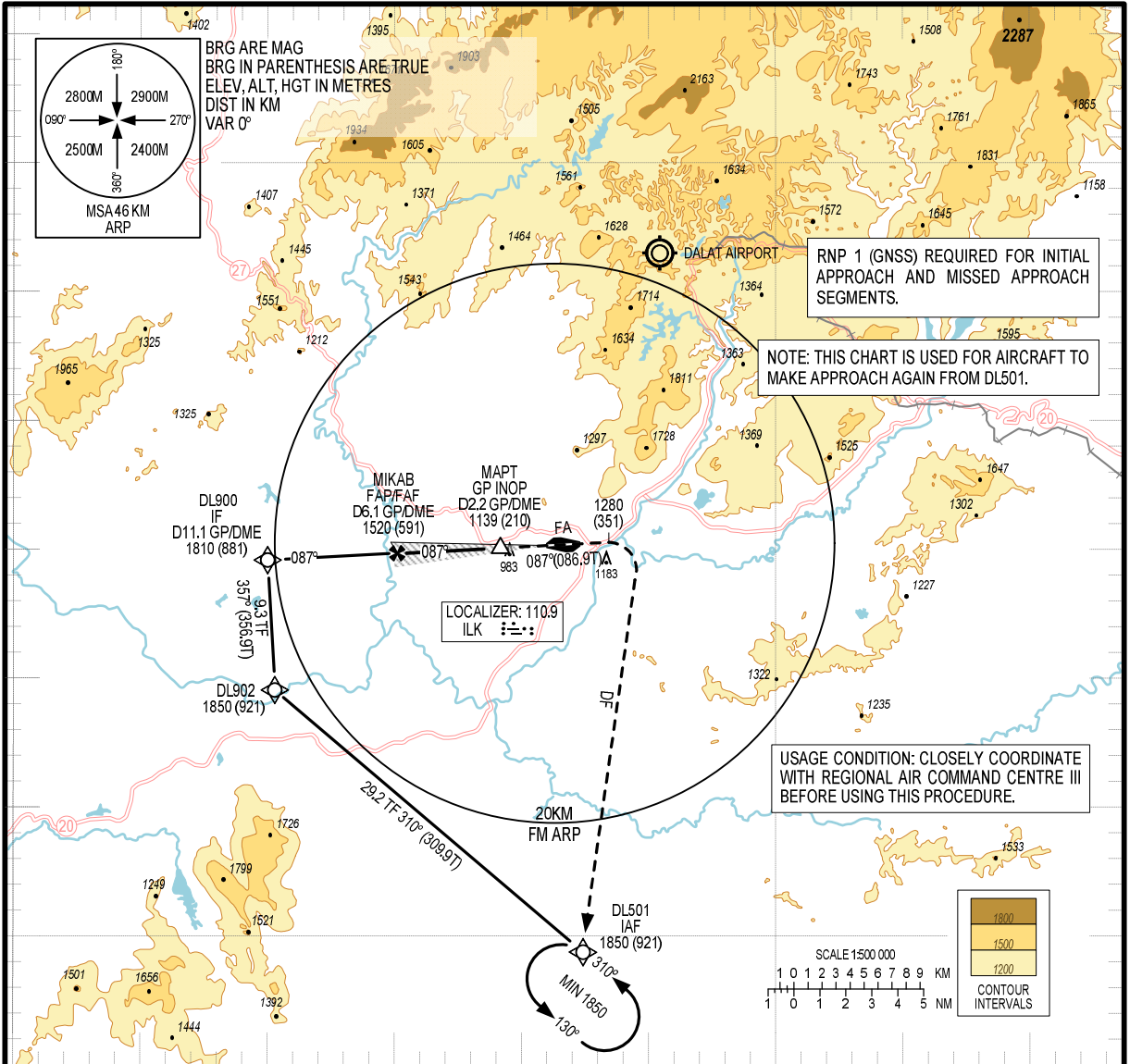
108°30'E

12° 00' N

12° 00' N

11° 30' N

11° 30' N

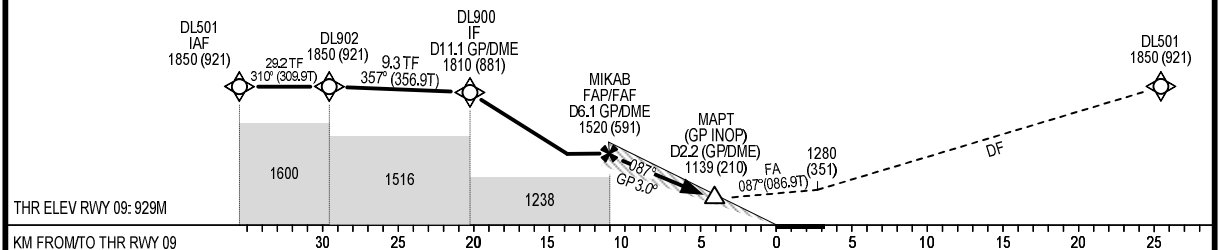


108°00'E

108°30'E

MISSED APPROACH:
FROM MAPT CLIMB ON TRACK 087° UNTIL PASSING 1280M,
TURN RIGHT DIRECT TO DL501 AT 1850M, JOIN HOLDING
PATTERN OR FOLLOW LIEN KHUONG TWR INSTRUCTIONS.

TRANSITION ALTITUDE 3050M



THR ELEV RWY 09: 929M

KM FROM TO THR RWY 09

OCA (H)	A	B	C	D	DISTANCE FROM FAF/FAF TO MAPT = 3.9NM (7222M)						
STRAIGHT-IN APPROACH	1089 (160)				SPEED (GS)	KMH	100	150	200	250	300
GP INOP	1139 (210)				TIME	M:S	4:20	2:53	2:09	1:44	1:27
CIRCLING	1500 (538)		1900 (938)		RATE OF DESCENT	M/S	1.46	2.18	2.91	3.64	4.37

CIRCLING IS ONLY IN THE SOUTH OF RWY