

STANDARD ARRIVAL CHART – INSTRUMENT (STAR) – ICAO

TRANSITION ALTITUDE
3050 m

TWR: 118.4

LAM DONG/LIEN KHUONG DOM (VVDL) RNP RWY 09 HONGA 2F, KANAM 2F, DILIN 2E, ROZAN 1A

108°00E

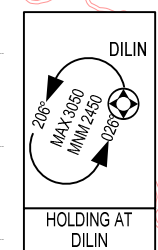
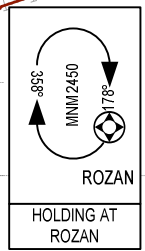
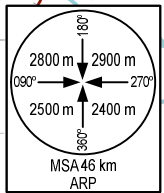
108°30E

12° 30' N

12° 00' N

11° 30' N

11° 00' N

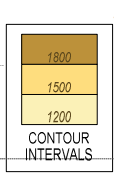
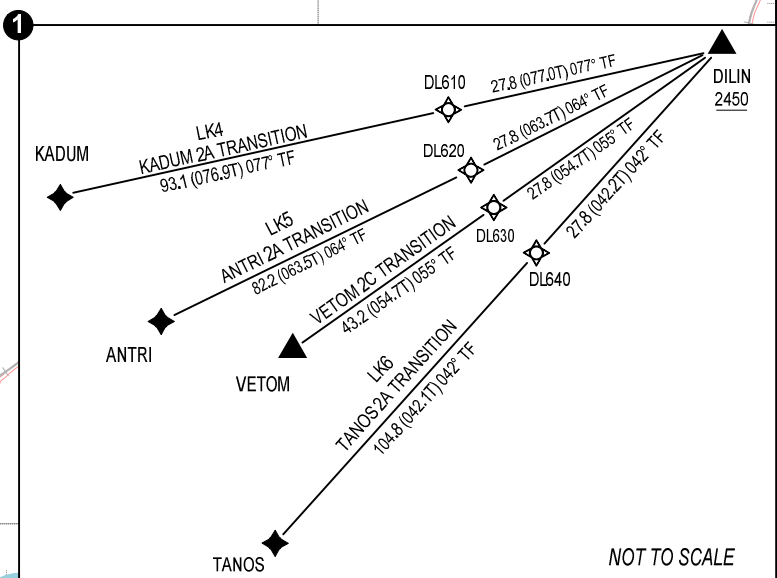
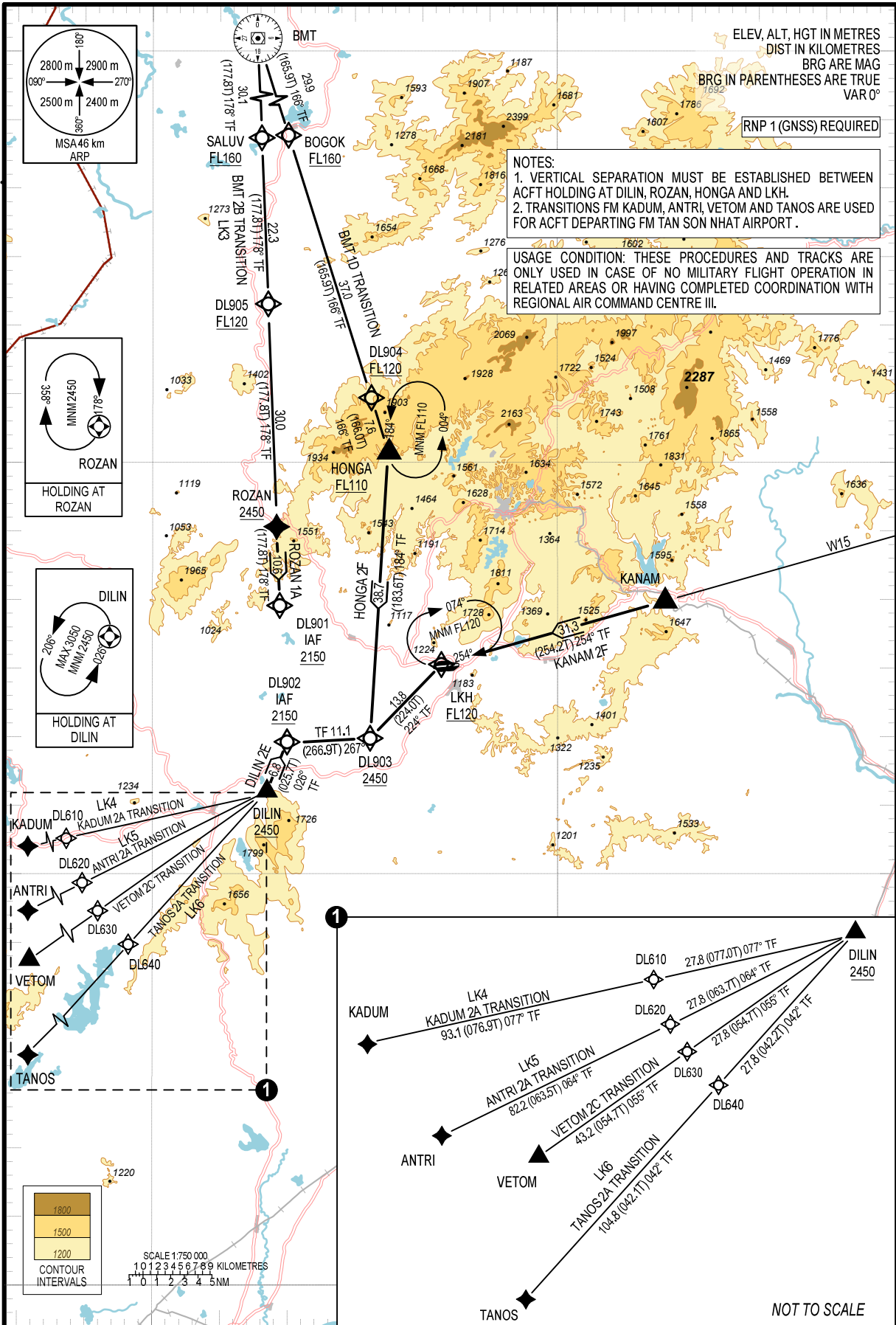


ELEV, ALT, HGT IN METRES
DIST IN KILOMETRES
BRG ARE MAG
BRG IN PARENTHESES ARE TRUE
VAR 0°

RNP 1 (GNSS) REQUIRED

NOTES:
1. VERTICAL SEPARATION MUST BE ESTABLISHED BETWEEN ACFT HOLDING AT DILIN, ROZAN, HONGA AND LKH.
2. TRANSITIONS FM KADUM, ANTRI, VETOM AND TANOS ARE USED FOR ACFT DEPARTING FM TAN SON NHAT AIRPORT.

USAGE CONDITION: THESE PROCEDURES AND TRACKS ARE ONLY USED IN CASE OF NO MILITARY FLIGHT OPERATION IN RELATED AREAS OR HAVING COMPLETED COORDINATION WITH REGIONAL AIR COMMAND CENTRE III.



SCALE 1:750 000
0 1 2 3 4 5 KILOMETRES
0 1 2 3 4 5 NM

NOT TO SCALE