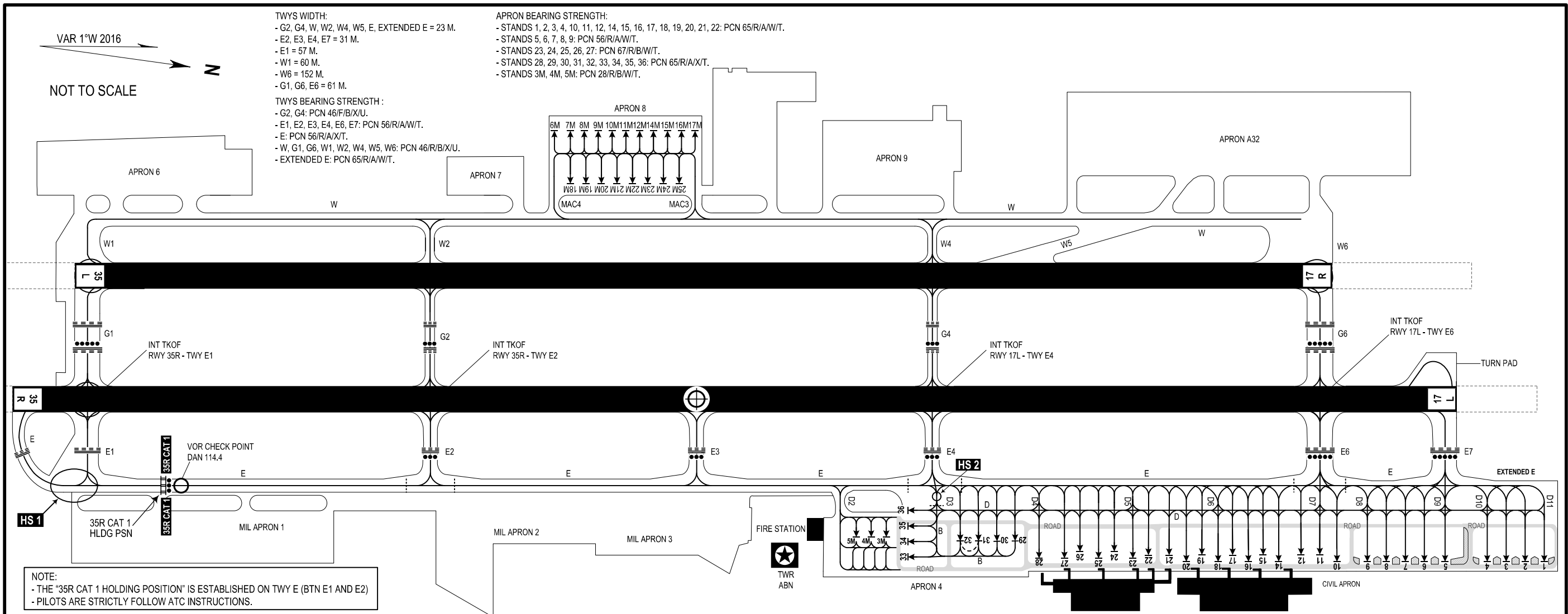


TWR: 118.35 PRI  
 118.05 SRY  
 GROUND: 121.6 PRI  
 121.9 SRY



VAR 1°W 2016  
 NOT TO SCALE

**TWYS WIDTH:**  
 - G2, G4, W, W2, W4, W5, E, EXTENDED E = 23 M.  
 - E2, E3, E4, E7 = 31 M.  
 - E1 = 57 M.  
 - W1 = 60 M.  
 - W6 = 152 M.  
 - G1, G6, E6 = 61 M.

**TWYS BEARING STRENGTH :**  
 - G2, G4: PCN 46/F/B/X/U.  
 - E1, E2, E3, E4, E6, E7: PCN 56/R/A/W/T.  
 - E: PCN 56/R/A/X/T.  
 - W, G1, G6, W1, W2, W4, W5, W6: PCN 46/R/B/X/U.  
 - EXTENDED E: PCN 65/R/A/W/T.

**APRON BEARING STRENGTH:**  
 - STANDS 1, 2, 3, 4, 10, 11, 12, 14, 15, 16, 17, 18, 19, 20, 21, 22: PCN 65/R/A/W/T.  
 - STANDS 5, 6, 7, 8, 9: PCN 56/R/A/W/T.  
 - STANDS 23, 24, 25, 26, 27: PCN 67/R/B/W/T.  
 - STANDS 28, 29, 30, 31, 32, 33, 34, 35, 36: PCN 65/R/A/X/T.  
 - STANDS 3M, 4M, 5M: PCN 28/R/B/W/T.

**NOTE:**  
 - THE "35R CAT 1 HOLDING POSITION" IS ESTABLISHED ON TWY E (BTN E1 AND E2)  
 - PILOTS ARE STRICTLY FOLLOW ATC INSTRUCTIONS.

**OPERATIONAL PROCEDURES OF AIRCRAFT STAND:**  
**\* FOR CIVIL APRON**  
 - STAND 1 USED FOR AIRCRAFT CODE C (WINGSPAN UP TO BUT NOT INCLUDING 36 M); ABLE TO BE USED FOR AIRCRAFT CODE D/E WHEN THERE IS NO AIRCRAFT PARKING AT STAND 2.  
 + NOTES: STAND 1 IS USED AS ISOLATED STAND, WHEN AIRCRAFT IS USED IN ISOLATION SITUATION, STANDS 2, 3 AND A PORTION OF TWY E (THE PORTION FROM STAND 1 TO STAND 3) ARE NOT USED.  
 - STANDS 2, 3, 6, 7, 8, 16, 18, 20, 23, 25, 30 USED FOR AIRCRAFT CODE C (WINGSPAN UP TO BUT NOT INCLUDING 36 M); ABLE TO BE USED FOR AIRCRAFT CODE D/E (WINGSPAN FROM 36 M UP TO BUT NOT INCLUDING 65 M) WHEN THERE IS NO AIRCRAFT PARKING AT THE ADJACENT POSITION NEXT TO STAND.  
 - STAND 4 USED FOR AIRCRAFT CODE C (WINGSPAN UP TO BUT NOT INCLUDING 36 M); ABLE TO BE USED FOR AIRCRAFT CODE D/E WHEN THERE IS NO AIRCRAFT PARKING AT STAND 3.  
 - STAND 5 USED FOR AIRCRAFT CODE C (WINGSPAN UP TO BUT NOT INCLUDING 36 M); ABLE TO BE USED FOR AIRCRAFT CODE D/E WHEN THERE IS NO AIRCRAFT PARKING AT STAND 6.  
 - STAND 9 USED FOR AIRCRAFT CODE C (WINGSPAN UP TO BUT NOT INCLUDING 36 M); ABLE TO BE USED FOR AIRCRAFT CODE D/E WHEN THERE IS NO AIRCRAFT PARKING AT STAND 8.  
 - STAND 10 USED FOR AIRCRAFT CODE C (WINGSPAN UP TO BUT NOT INCLUDING 36 M); ABLE TO BE USED FOR AIRCRAFT CODE D/E WHEN THERE IS NO AIRCRAFT PARKING AT STAND 11.  
 + NOTES: STAND 10 IS USED FOR SPECIAL FLIGHT.  
 - STANDS 11, 12, 21, 22, 24, 26, 28, 29, 32 USED FOR AIRCRAFT CODE C (WINGSPAN UP TO BUT NOT INCLUDING 36 M).  
 - STAND 14 USED FOR AIRCRAFT CODE C (WINGSPAN UP TO BUT NOT INCLUDING 36 M); ABLE TO BE USED FOR AIRCRAFT CODE D/E WHEN THERE IS NO AIRCRAFT PARKING AT STAND 15 AND STAND 12 IS ONLY ALLOWED TO BE USED FOR PARKING AIRCRAFT WITH WINGSPAN UP TO 28 M; OR ABLE TO BE USED FOR AIRCRAFT CODE D (WINGSPAN FROM 36 M UP TO BUT NOT INCLUDING 52 M) WHEN THERE IS NO AIRCRAFT PARKING AT STAND 15 AND STAND 12 IS ONLY ALLOWED FOR PARKING AIRCRAFT WITH WINGSPAN UP TO 36 M.  
 - STANDS 15, 17, 19 ONLY USED FOR AIRCRAFT WITH WINGSPAN UP TO 28 M WHEN THERE IS NO AIRCRAFT WITH WINGSPAN MORE THAN 28 M PARKING AT ADJACENT STANDS  
 - STAND 27 USED FOR AIRCRAFT CODE C (WINGSPAN UP TO BUT NOT INCLUDING 36 M); ABLE TO BE USED FOR AIRCRAFT CODE D/E WHEN THERE IS NO AIRCRAFT PARKING AT STAND 26 AND STAND 28 IS STILL ALLOWED TO BE USED FOR PARKING AIRCRAFT CODE C (WINGSPAN UP TO BUT NOT INCLUDING 36 M).  
 - STAND 31 USED FOR AIRCRAFT UP TO CODE C (WINGSPAN UP TO BUT NOT INCLUDING 36 M); ABLE TO BE USED FOR AIRCRAFT CODE D/E (WINGSPAN FROM 36 M UP TO BUT NOT INCLUDING 65 M) WHEN THERE IS NO AIRCRAFT PARKING AT THE ADJACENT POSITION NEXT TO STAND; STAND 31 IS ESTABLISHED THE STOP LINE (15 M FROM THE EXISTING STOP LINE TO THE WEST) AND THE INTERRUPTED TAXILANE FROM STAND 31 TO STAND 32 FOR OPERATING AIRCRAFT C17, C130.  
 - STANDS 33, 34, 35, 36 USED FOR AIRCRAFT WITH WINGSPAN UP TO 30 M; STANDS 33, 34, 35 USED FOR AIRCRAFT A321 OR EQUIVALENT WHEN THE ADJACENT STANDS ONLY USED FOR AIRCRAFT WITH WINGSPAN UP TO 24 M.

**\* FOR MILITARY APRON**  
 - STANDS 3M, 4M, 5M UNLIMITED OPERATION FOR AIRCRAFT WITH WINGSPAN UP TO BUT NOT INCLUDING 30 M AND EQUIVALENT (EMBRAER, ATR 72 ...); FOR AIRCRAFT WITH WINGSPAN FROM 30 M UP TO BUT NOT INCLUDING 36 M (A320, A321) AND EQUIVALENT: COMMERCIALY OPERATED MAXIMUM 3 FLIGHT/STAND/DAY; UNLIMITED OPERATION IN CASE OF BEING USED FOR UNLOADED AIRCRAFT PARKING OR AIRCRAFT PARKING OVERNIGHT.  
 - STANDS 7M, 8M, 9M, 10M, 11M, 12M, 14M, 15M, 16M, 17M USED FOR AIRCRAFT WITH WINGSPAN UP TO 29 M.  
 - STANDS 6M, 18M, 19M, 20M, 21M, 22M, 23M, 24M, 25M USED FOR AIRCRAFT UP TO A321 OR EQUIVALENT.

\* INS COORDINATES FOR ACFT STANDS REFER TO TEXTUAL FOR DETAILS.

**REMARKS**  
 - WHEN THERE IS AIRCRAFT CODE D/E OPERATING ON TWY E: THE AIRCRAFT WITH WINGSPAN MORE THAN 36 M ARE NOT ALLOWED TO OPERATE ON TAXILANE D ACROSS THE OPERATING AREA OF AIRCRAFT CODE E.  
 - WHEN THERE IS AIRCRAFT CODE D/E OPERATING ON TWY D (THE PORTION FROM STANDS FROM 1 TO 5): THE GROUND VEHICLES, FACILITIES ARE NOT ALLOWED TO MOVE ON THE SERVICE ROAD BEHIND OF STANDS FROM 1 TO 5.  
 - WHEN THERE IS AIRCRAFT CODE D/E OPERATING AT STANDS 30/31: THE GROUND VEHICLES, FACILITIES ARE NOT ALLOWED TO MOVE ON THE ROAD BEHIND OF STANDS 30/31.  
 - WHEN THERE IS AIRCRAFT OPERATING AT STAND 35: THE GROUND VEHICLES, FACILITIES ARE NOT ALLOWED TO MOVE ON THE WEST SERVICE ROAD PARALLEL WITH STAND 35.  
 - THE GROUND VEHICLES, FACILITIES WHEN OPERATING AT STAND 36: ONLY MOVE WITHIN SAFETY AREA THAT AS SIGNED TO ENSURE SAFETY DURING THE AIRCRAFT OPERATING ON TWY E.  
 - AREA LIMITATIONS OF STANDS 3M, 4M, 5M:  
 + WHEN THERE IS AIRCRAFT WITH THE LENGTH MORE THAN 30 M PARKING AT STAND, ALL AIRCRAFT ARE NOT ALLOWED TO MOVE BEHIND THE PARKING AIRCRAFT.  
 + WHEN THERE IS AIRCRAFT WITH THE LENGTH UP TO 30 M PARKING AT STAND: AIRCRAFT WITH WINGSPAN MORE THAN 18 M ARE NOT ALLOWED TO MOVE BEHIND THE PARKING AIRCRAFT.  
 + IN CASE THERE ARE AIRCRAFT A321 OR EQUIVALENT PARKING AT STAND 5M: AIRCRAFT WITH WINGSPAN MORE THAN 26 M ARE NOT ALLOWED TO SELF-TAXI VIA TWY D2, TOW TRACTOR IS USED TO TOW AIRCRAFT TO TAXILANE D2 (THERE ARE SECURITY GUARDS) TO DEPART (FOLLOW-ME CAR IS USED TO LEAD THE AIRCRAFT OUT/INTO STAND).  
 - OPERATING AIRCRAFT ON APRON MUST ENSURE SAFE DISTANCE WITH THE OTHER AIRCRAFT OPERATING ON APRON. WHEN THERE ARE AIRCRAFT OPERATING ON TAXILANE D, THE OTHER AIRCRAFT ARE NOT ALLOWED TO BE TOWED/PUSHED FROM AIRCRAFT STAND ACROSS THE MANOEUVRING AREA OF AIRCRAFT MOVING ON TAXILANE D.

LEGEND	
VOR CHECK POINT AND FREQUENCY	DAN 114.4
HOT SPOT AND NAME	HS 1
ACFT STAND	1
RWY-HOLDING POSITION (PATTERN A)	≡≡≡
RWY-HOLDING POSITION (PATTERN B)	≡≡≡
LEAD-OUT MARKING	----
INTERMEDIATE HOLDING POSITION	.....
STOP BAR	●●●
SERVICE ROAD	ROAD
VEHICLES AREA	▭
ARP	⊕