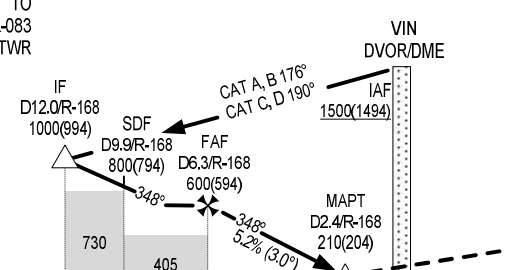


**MISSED APPROACH:**  
CLIMB VIA R-348 TO 300M (294), TURN RIGHT TO INTERCEPT R-083 (MAX SPEED 425 KMH) TO D14.0/R-083 AT 1200M, JOIN HOLDING PATTERN OR FOLLOW VINH TWR INSTRUCTIONS.

**TRANSITION ALT 2750**



**AD ELEV 6M  
KM TO/FM THR RWY 35**

**FAF - MAPT: 3.9NM (7.2KM)**

OCA(H)	A	B	C	D
STRAIGHT-IN APPROACH	210(204)			
CIRCLING	210(204)	390(384)	430(424)	

GS	KMH	100	150	200	250	300	350
TIME	MIN : SEC	4:20	2:53	2:10	1:44	1:26	1:14
RATE OF DESCENT 5.2%	M/S	1.5	2.2	2.9	3.6	4.4	5.1