

STANDARD ARRIVAL CHART - INSTRUMENT (STAR) - ICAO

TRANSITION ALTITUDE 3050 m

TWR: 118.4

LAM DONG/LIANG KHUONG DOM (VVDL) RNP RWY 27  
KILEN 2B, KARDA 1A, DILIN 2F

108°00'E

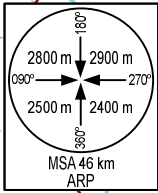
108°30'E

12° 30' N

12° 00' N

11° 30' N

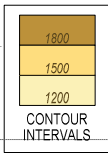
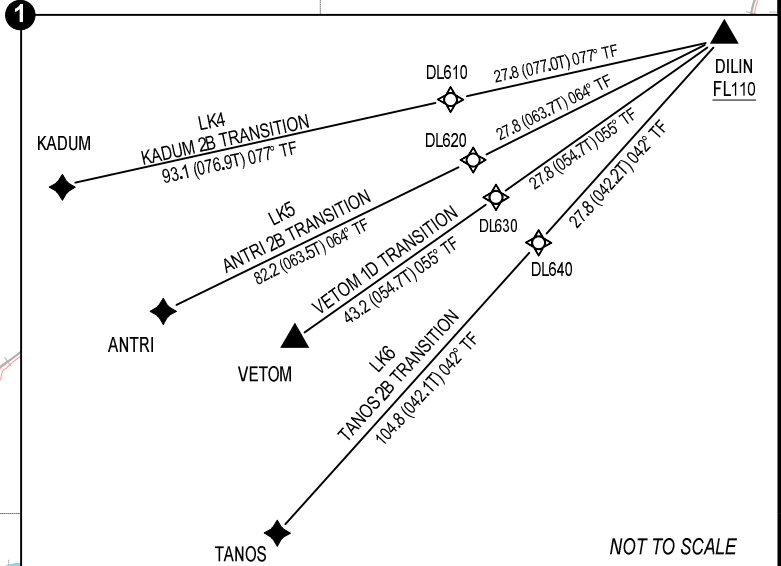
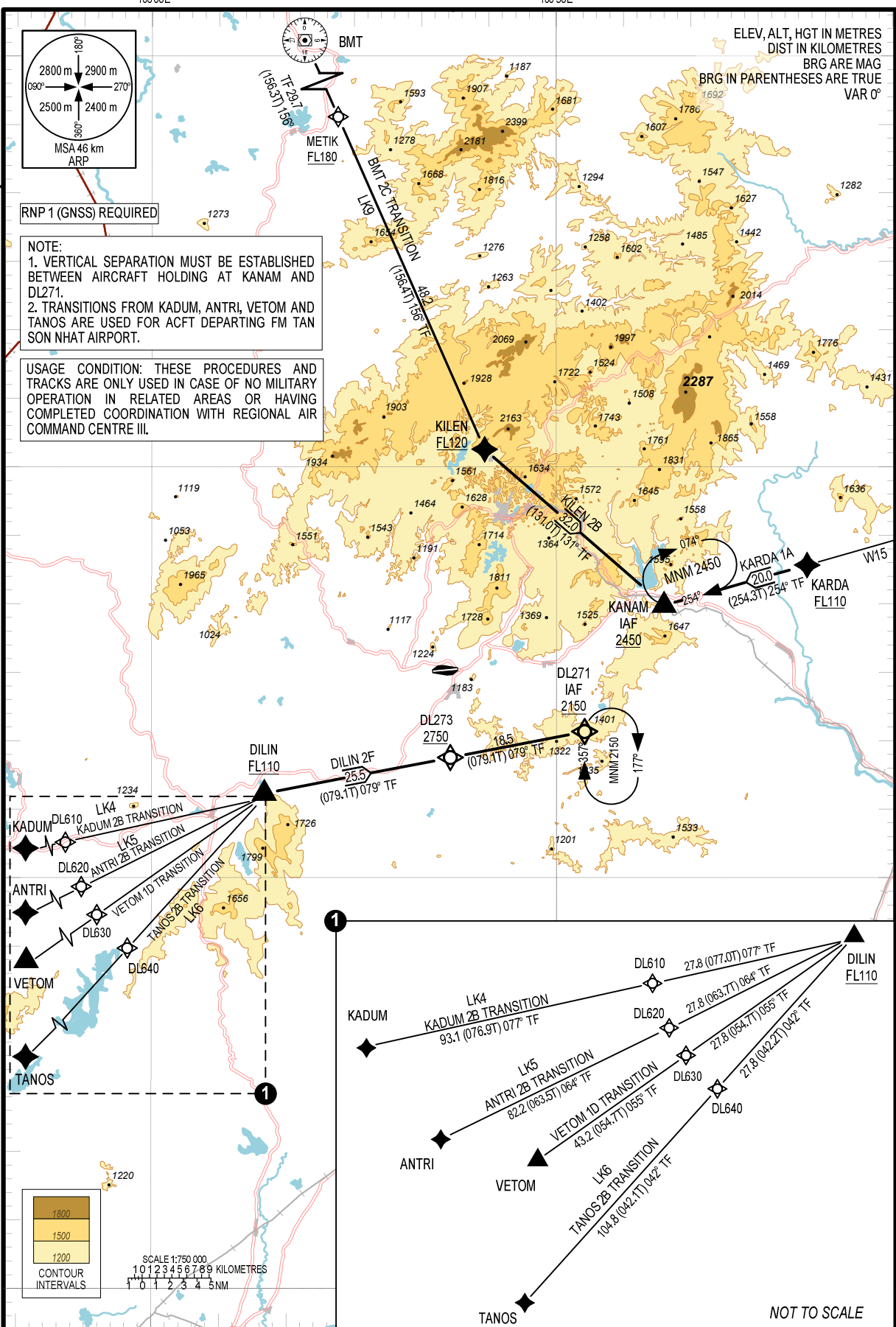
11° 00' N



RNP 1 (GNSS) REQUIRED

NOTE:  
1. VERTICAL SEPARATION MUST BE ESTABLISHED BETWEEN AIRCRAFT HOLDING AT KANAM AND DL271.  
2. TRANSITIONS FROM KADUM, ANTRI, VETOM AND TANOS ARE USED FOR ACFT DEPARTING FM TAN SON NHAT AIRPORT.

USAGE CONDITION: THESE PROCEDURES AND TRACKS ARE ONLY USED IN CASE OF NO MILITARY OPERATION IN RELATED AREAS OR HAVING COMPLETED COORDINATION WITH REGIONAL AIR COMMAND CENTRE III.



SCALE 1:750 000  
1 0 1 2 3 4 5 NM  
1 0 1 2 3 4 5 KILOMETRES

ELEV, ALT, HGT IN METRES  
DIST IN KILOMETRES  
BRG ARE MAG  
BRG IN PARENTHESES ARE TRUE  
VAR 0°