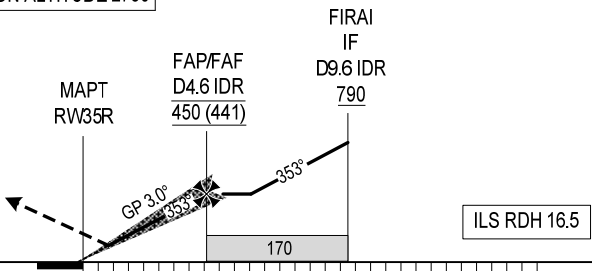


DME IDR	NM	1.4	2	3	4	4.6
ALT	m	145	200	300	395	450

TRANSITION ALTITUDE 2750

MISSED APPROACH:  
CLIMB ON COURSE 353° TO DN354, TURN RIGHT TO DN333, DN555 (MAX IAS 425 km/h) AND KONGA AT 1200 m. JOIN HOLDING PATTERN OR FOLLOW DA NANG TWR INSTRUCTIONS.



THR ELEV 8.5  
KILOMETRES TO/ FM THR RWY 35R

OCA (H)		A	B	C	D	GS	km/h	150	200	250	300	350
STRAIGHT-IN APPROACH	CAT I	70 (61)				RATE OF DESCENT	m/s	2.2	2.9	3.6	4.4	5.1
	GP INOP	145 (136)				FAP – MAPT 8.1 km	min:s	3:15	2:26	1:57	1:38	1:24
CIRCLING		310 (301)	420 (411)	490 (481)	720 (711)							

CIRCLING IS ONLY IN THE EAST OF RWY.