

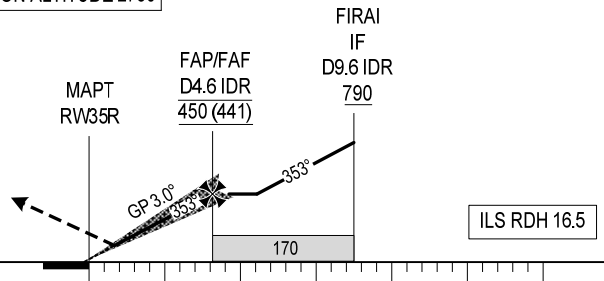
USAGE CONDITION: IN CASE OF MILITARY FLIGHT OPERATION, THIS PROCEDURE IS ONLY USED WHEN HAVING CLOSELY COORDINATED AND AGREED BY MILITARY AIR COMMANDER AT DA NANG AERODROME OR REGIONAL AIR COMMAND CENTRE II.

- REQUIRED
1. DME.
 2. RNAV 1 (GNSS) FOR INITIAL APPROACH AND MISSED APPROACH SEGMENTS.
 3. ATS SURVEILLANCE.

DME IDR	NM	1.4	2	3	4	4.6
ALT	m	145	200	300	395	450

TRANSITION ALTITUDE 2750

MISSED APPROACH:
CLIMB ON COURSE 353° TO DN354, TURN RIGHT TO DN333, DN555 (MAX IAS 425 km/h) AND KONGA AT 1200 m. JOIN HOLDING PATTERN OR FOLLOW DA NANG TWR INSTRUCTIONS.



THR ELEV 8.5
KILOMETRES TO/FM THR RWY 35R

OCA (H)		A	B	C	D
STRAIGHT-IN APPROACH	CAT I	70 (61)			
	GP INOP	145 (136)			
CIRCLING		310 (301)	420 (411)	490 (481)	720 (711)

GS	km/h	150	200	250	300	350
RATE OF DESCENT	m/s	2.2	2.9	3.6	4.4	5.1
FAP – MAPT 8.1 km	min:s	3:15	2:26	1:57	1:38	1:24

CIRCLING IS ONLY IN THE EAST OF RWY.