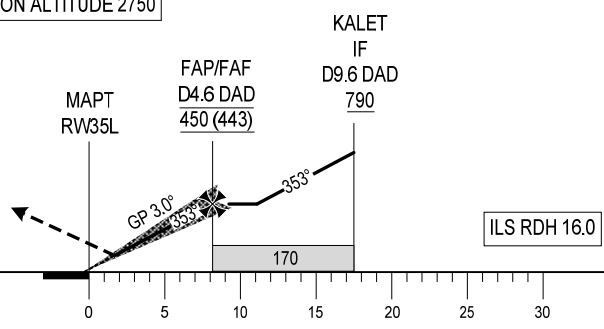


USAGE CONDITION: IN CASE OF MILITARY FLIGHT OPERATION, THIS PROCEDURE IS ONLY USED WHEN HAVING CLOSELY COORDINATED AND AGREED BY MILITARY AIR COMMANDER AT DA NANG AERODROME OR REGIONAL AIR COMMAND CENTRE II.

| | | | | | | |
|---------|----|-----|-----|-----|-----|-----|
| DME DAD | NM | 1.4 | 2 | 3 | 4 | 4.6 |
| ALT | m | 145 | 200 | 300 | 395 | 450 |

TRANSITION ALTITUDE 2750

MISSED APPROACH :
 CLIMB ON COURSE 353° TO DN353, TURN RIGHT TO DN333, DN555 (MAX IAS 425 km/h) AND KONGA AT 1200 m. JOIN HOLDING PATTERN OR FOLLOW DA NANG TWR INSTRUCTIONS.



THR ELEV 7.5
 KILOMETRES TO/FM THR RWY 35L

| | | | | | |
|----------------------|---------|-----------|-----------|-----------|-----------|
| OCA (H) | | A | B | C | D |
| STRAIGHT-IN APPROACH | CAT I | 69 (62) | | | |
| | GP INOP | 145 (136) | | | |
| CIRCLING | | 310 (301) | 420 (411) | 490 (481) | 720 (711) |

| | | | | | | |
|-------------------|-------|------|------|------|------|------|
| GS | km/h | 150 | 200 | 250 | 300 | 350 |
| RATE OF DESCENT | m/s | 2.2 | 2.9 | 3.6 | 4.4 | 5.1 |
| FAF – MAPT 8.1 km | min:s | 3:16 | 2:27 | 1:58 | 1:38 | 1:24 |

CIRCLING IS ONLY IN THE EAST OF RWY.