

**STANDARD ARRIVAL CHART –  
INSTRUMENT (STAR) – ICAO**

**TRANSITION ALTITUDE  
2750**

APP 120.45 PFI  
125.45 SRY  
TWR 118.35 PFI  
118.05 SRY

**DA NANG/DA NANG INTL (VVDN)  
RNAV RWY 35L/R  
HUE 2M, CAHEO 2M, BUNTA 2M**

ELEV. ALT IN METRES  
DIST IN KILOMETRES  
BRG ARE MAG  
VAR 1° W

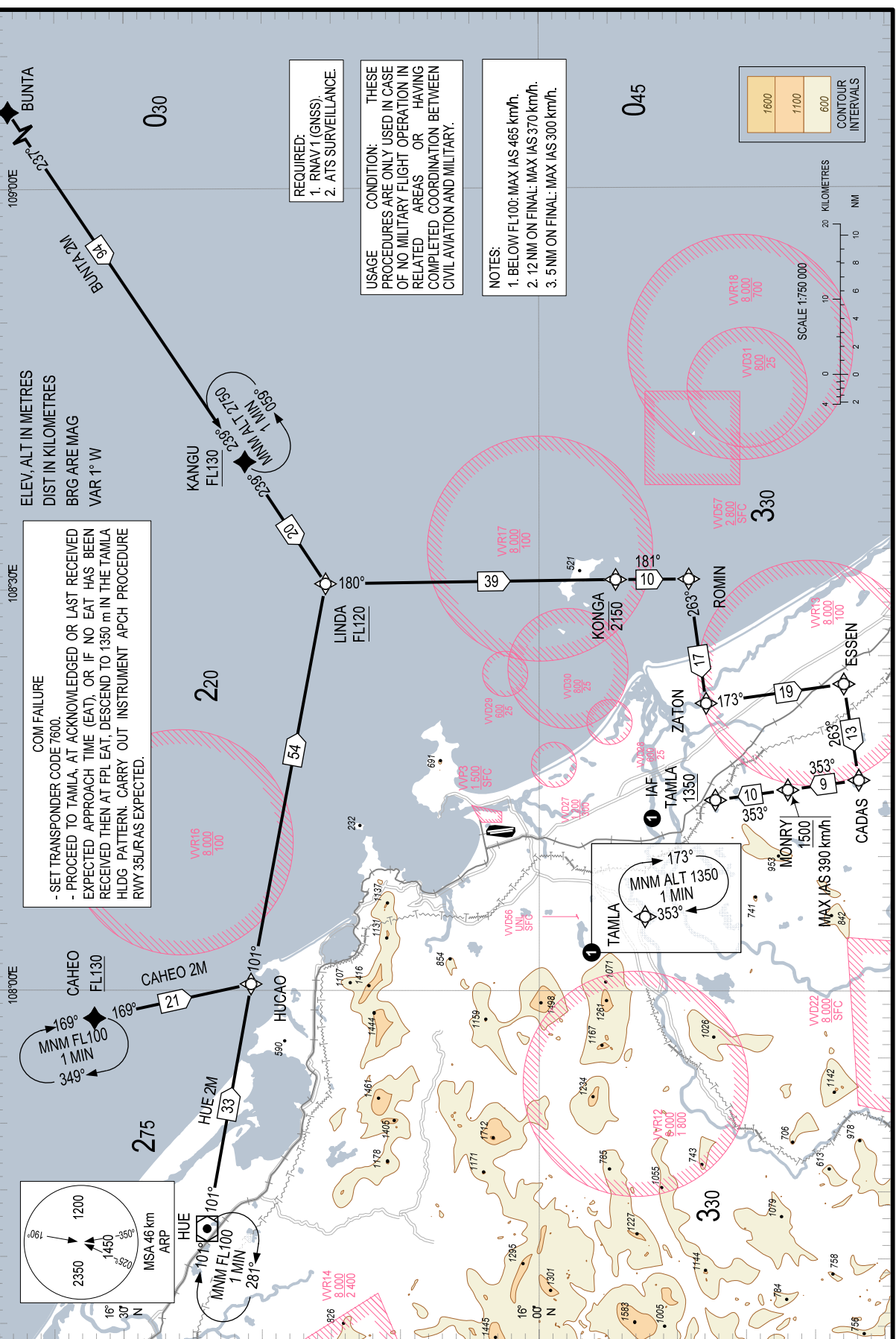
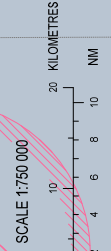
**COM FAILURE**  
- SET TRANSPONDER CODE 7600.  
- PROCEED TO TAMLA AT ACKNOWLEDGED OR LAST RECEIVED EXPECTED APPROACH TIME (EAT), OR IF NO EAT HAS BEEN RECEIVED THEN AT FPL EAT. DESCEND TO 1350 m IN THE TAMLA HDG PATTERN. CARRY OUT INSTRUMENT APCH PROCEDURE RWY 35L/R AS EXPECTED.

**REQUIRED:**  
1. RNAV 1 (GNSS).  
2. ATS SURVEILLANCE.

**USAGE CONDITION:** THESE PROCEDURES ARE ONLY USED IN CASE OF NO MILITARY FLIGHT OPERATION IN RELATED AREAS OR HAVING COMPLETED COORDINATION BETWEEN CIVIL AVIATION AND MILITARY.

**NOTES:**  
1. BELOW FL100: MAX IAS 465 km/h.  
2. 12 NM ON FINAL: MAX IAS 370 km/h.  
3. 5 NM ON FINAL: MAX IAS 300 km/h.

1600	1100	600
CONTOUR INTERVALS		



**HUE**  
MSA 46 km ARP  
2350  
1200  
1450  
101°  
190°  
16° 30' N

**TAMLA**  
MNM ALT 1350  
1 MIN  
173°  
353°

**030**

**045**

108°30'E

108°30'E

108°30'E

16° 30' N

KILOMETRES

NM

20

10

0

2

4

6

8

10

12

14

16

18

20

SCALE 1:750 000

0

2

4

6

8

10

12

14

16

18

20

SCALE 1:750 000

0

2

4

6

8

10

12

14

16

18

20

SCALE 1:750 000

0

2

4

6

8

10

12

14

16

18

20

SCALE 1:750 000

0

2

4

6

8

10

12

14

16

18

20

SCALE 1:750 000

0

2

4

6

8

10

12

14

16

18

20

SCALE 1:750 000

0

2

4

6

8

10

12

14

16

18

20

SCALE 1:750 000

0

2

4

6

8

10

12

14

16

18

20

SCALE 1:750 000

0

2

4

6

8

10

12

14

16

18

20

SCALE 1:750 000

0

2

4

6

8

10

12

14

16

18

20

SCALE 1:750 000

0

2

4

6

8

10

12

14

16

18

20

SCALE 1:750 000

0

2

4

6

8

10

12

14

16

18

20

SCALE 1:750 000

0

2

4

6

8

10

12

14

16

18

20

SCALE 1:750 000

0

2

4

6

8

10

12

14

16

18

20

SCALE 1:750 000

0

2

4

6

8

10

12

14

16

18

20

SCALE 1:750 000

0

2

4

6

8

10

12

14

16

18

20

SCALE 1:750 000

0

2

4

6

8

10

12

14

16

18

20

SCALE 1:750 000

0

2

4

6

8

10

12

14

16

18

20

SCALE 1:750 000

0

2

4

6

8

10

12

14

16

18

20

SCALE 1:750 000

0

2

4

6

8

10

12

14

16

18

20

SCALE 1:750 000

0

2

4

6

8

10

12

14

16

18

20

SCALE 1:750 000

0

2

4

6

8

10

12

14

16

18

20