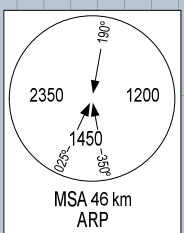
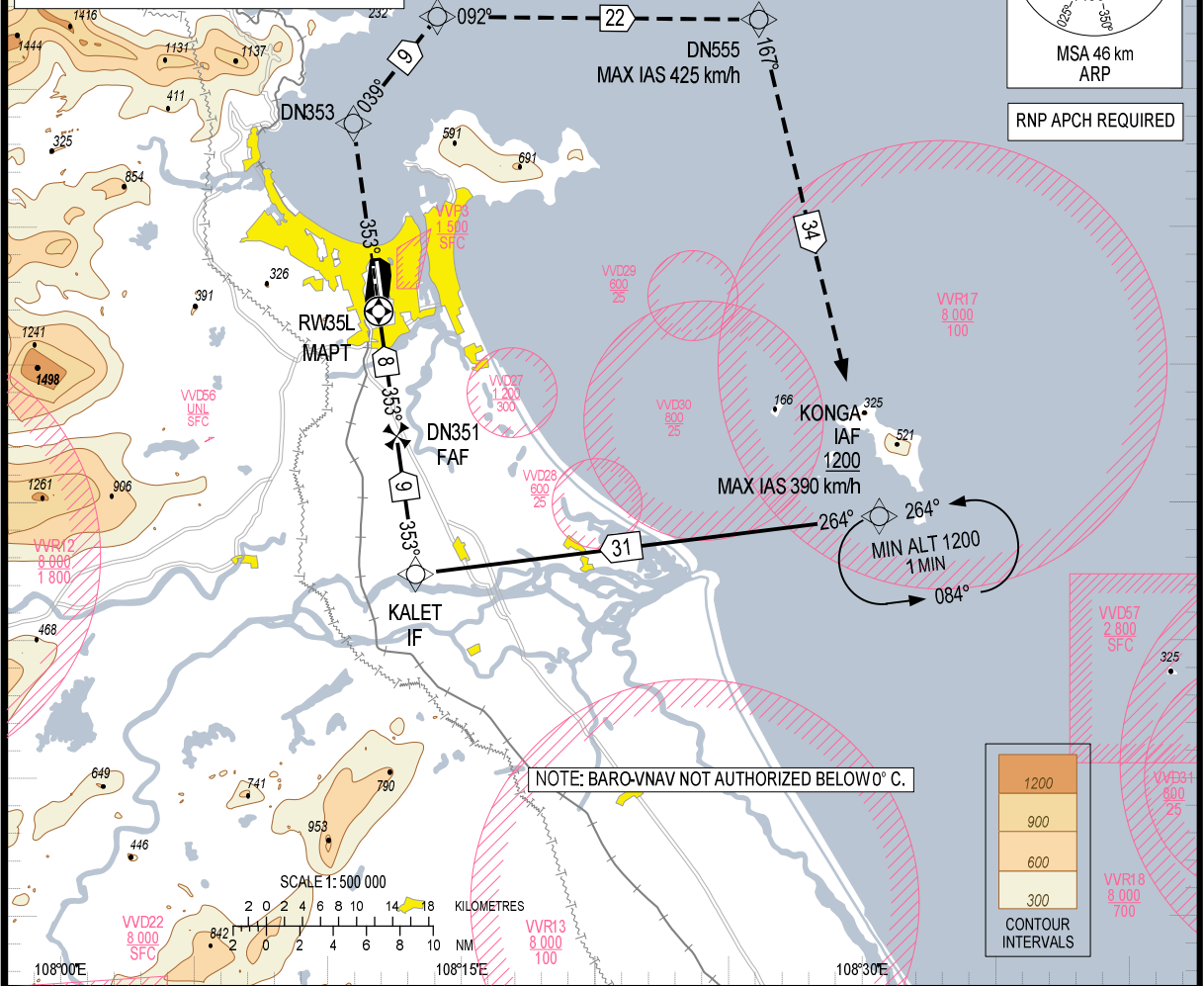


USAGE CONDITION: IN CASE OF MILITARY FLIGHT OPERATION, THIS PROCEDURE IS ONLY USED WHEN HAVING CLOSELY COORDINATED AND AGREED BY MILITARY AIR COMMANDER AT DA NANG AERODROME OR REGIONAL AIR COMMAND CENTRE II.

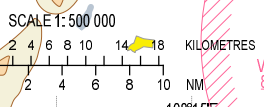
ELEV, ALT, HGT IN METRES
DIST IN KILOMETRES
BRG ARE MAG
VAR 1° W



RNP APCH REQUIRED



NOTE: BARO-NAV NOT AUTHORIZED BELOW 0° C.

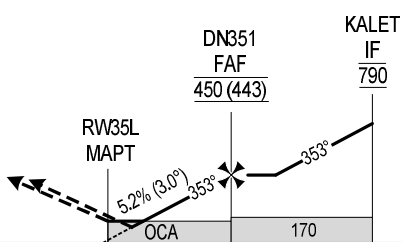


KILOMETRES TO NEXT WPT	RWY35L	2.4	4	6	8	8.2
ALT		150	230	335	440	450

TRANSITION ALTITUDE 2750

MISSED APPROACH :

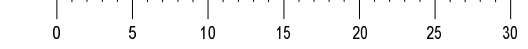
CLIMB ON COURSE 353° TO DN353, TURN RIGHT TO DN333, DN555 (MAX IAS 425 km/h) AND KONGA AT 1200 m. JOIN HOLDING PATTERN OR FOLLOW DA NANG TWR INSTRUCTIONS.



THR ELEV 7

TCH 15.25

KILOMETRES TO/FM THR RWY 35L



OCA (H)	A	B	C	D
LNAV/VNAV	110 (103)			
LNAV	145 (136)			
CIRCLING	310 (301)	420 (411)	490 (481)	720 (711)

GS	km/h	150	200	250	300	350
RATE OF DESCENT FAF – MAPT 5.2%	m/s	2.2	2.9	3.6	4.4	5.1

CIRCLING IS ONLY IN THE EAST OF RWY.