

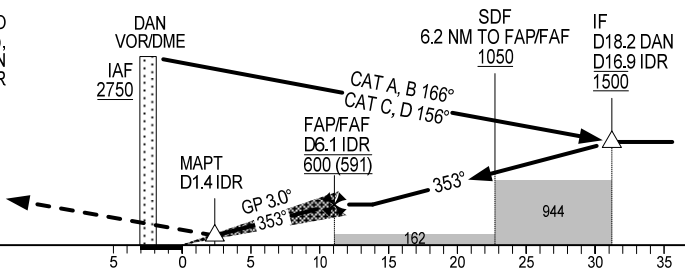
TRANSITION ALTITUDE 2750

MISSED APPROACH:
 CLIMB ON R-353 DAN TO D7.0 DAN, TURN RIGHT TO INTERCEPT R-107 HUE TO D40.5 HUE (MAX IAS 425 km/h), TURN RIGHT TO R-069.0/D14.5 DAN AT 1200 m. JOIN HOLDING PATTERN OR FOLLOW DA NANG TWR INSTRUCTIONS.

ILS RDH 16.5

THR ELEV 8.5

KILOMETRES TO/FM THR RWY 35R



OCA (H)		A	B	C	D
STRAIGHT-IN APCH	CAT I		70 (61)		
	GP INOP		145 (136)		
CIRCLING		310 (301)	420 (411)	490 (481)	720 (711)

GS	km/h	150	200	250	300
FAF-MAPT 4.7 NM (8.7 km)	min:s	3:29	2:37	2:05	1:44
RATE OF DESCENT 5.2% (3.0°)	m/s	2.2	2.9	3.6	4.4

CIRCLING IS ONLY IN THE EAST OF RWY.