

108°00'E 108°15'E 108°30'E



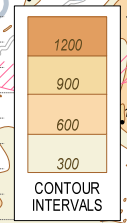
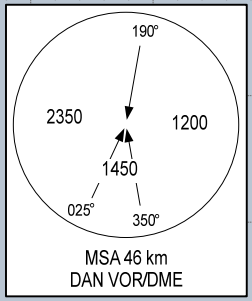
PHUBAI
VOR/DME 115.8
HUE
16°24'08"N
107°42'06"E
30 m

USAGE CONDITION: IN CASE OF MILITARY FLIGHT OPERATION, THIS PROCEDURE IS ONLY USED WHEN HAVING CLOSELY COORDINATED AND AGREED BY MILITARY AIR COMMANDER AT DA NANG AERODROME OR REGIONAL AIR COMMAND CENTRE II.

DANANG
VOR/DME 114.4
DAN
16°03'10"N
108°11'54"E
30 m

LLZ 110.5
DAD
GP/DME 329.6
DAD

ELEV, ALT, HGT IN METRES
DIST IN KILOMETRES
DME DIST (D) IN NM
BRG ARE MAG
VAR 1°W



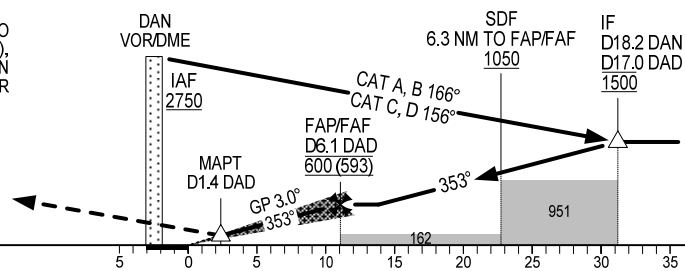
SCALE 1:550 000 446
18 KILOMETRES
CONTOUR INTERVALS
2 0 2 4 6 8 10 14 18 NM

108°00'E 108°15'E 108°30'E

TRANSITION ALTITUDE 2750

MISSED APPROACH:
CLIMB ON R-353 DAN TO D7.0 DAN, TURN RIGHT TO INTERCEPT R-107 HUE TO D40.5 HUE (MAX IAS 425 km/h), TURN RIGHT TO R-069/D14.5 DAN AT 1200 m. JOIN HOLDING PATTERN OR FOLLOW DA NANG TWR INSTRUCTIONS.

ILS RDH 16.0
THR ELEV 7.5



KILOMETRES TO/FM THR RWY 35L

OCA (H)		A	B	C	D
STRAIGHT -IN APCH	CAT I		69 (62)		
	GP INOP		145 (136)		
CIRCLING		310 (301)	420 (411)	490 (481)	720 (711)

GS	km/h	150	200	250	300
FAF-MAPT 4.7 NM (8.7 km)	min:s	3:29	2:37	2:05	1:44
RATE OF DESCENT 5.2% (3.0°)	m/s	2.2	2.9	3.6	4.4

CIRCLING IS ONLY IN THE EAST OF RWY.