

INSTRUMENT APPROACH CHART – ICAO

AERODROME ELEV 9 m
 HEIGHTS RELATED TO
 THR RWY 35L – ELEV 7.5 m

APP 120.45 PFI
 125.45 SRY
 TWR 118.35 PFI
 118.05 SRY

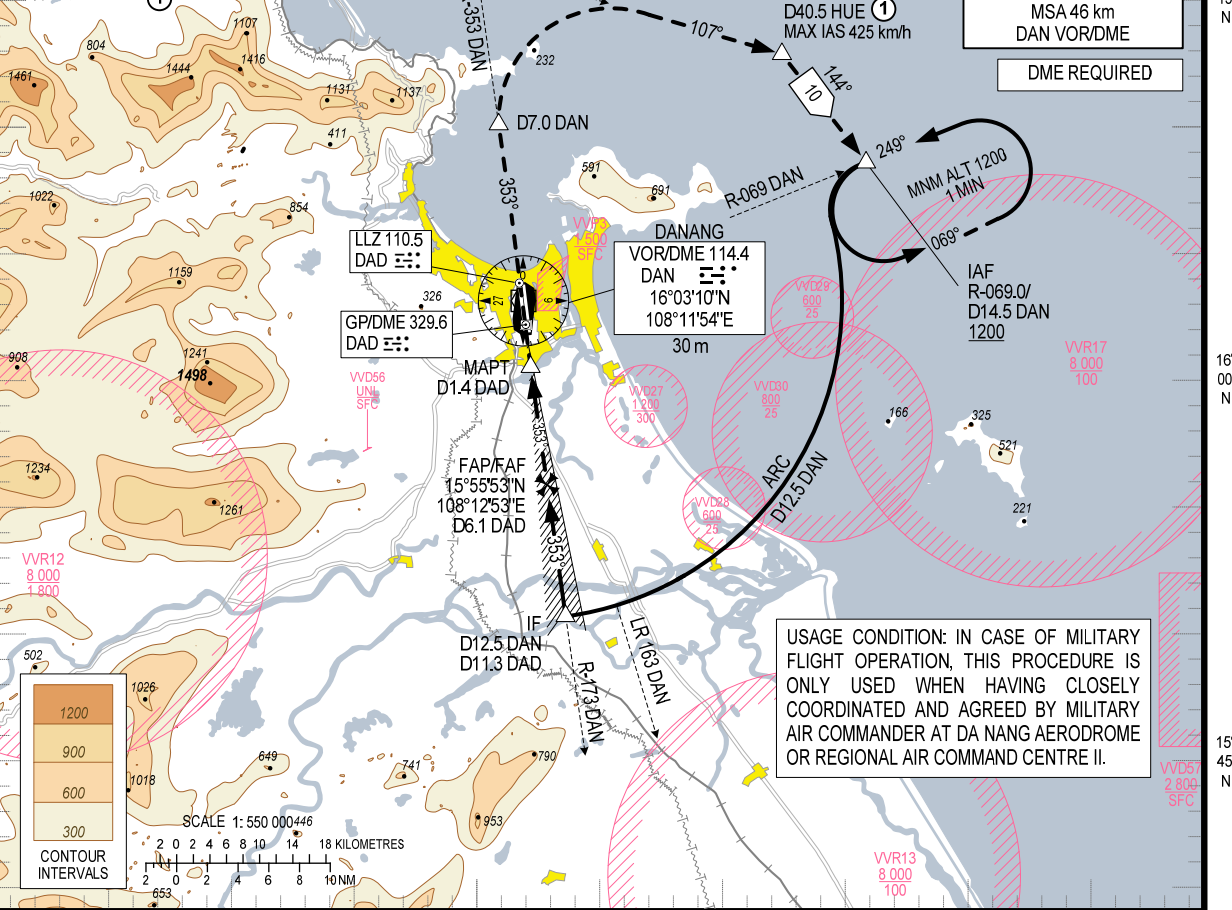
**DA NANG/DA NANG INTL (VVDN)
 ILS W RWY 35L**

108°00'E 108°15'E 108°30'E

PHUBAI
 VOR/DME 115.8
 HUE
 16°24'08"N
 107°42'06"E
 30 m

ELEV, ALT, HGT IN METRES
 DIST IN KILOMETRES
 DME DIST (D) IN NM
 BRG ARE MAG
 VAR 1°W

MSA 46 km
 DAN VOR/DME
DME REQUIRED



USAGE CONDITION: IN CASE OF MILITARY FLIGHT OPERATION, THIS PROCEDURE IS ONLY USED WHEN HAVING CLOSELY COORDINATED AND AGREED BY MILITARY AIR COMMANDER AT DA NANG AERODROME OR REGIONAL AIR COMMAND CENTRE II.

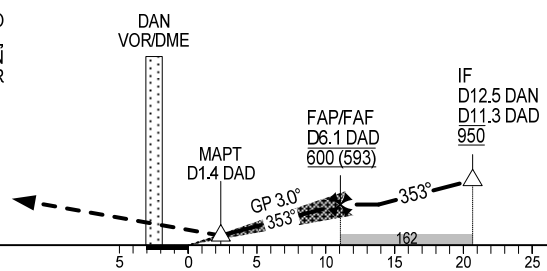
TRANSITION ALTITUDE 2750

MISSED APPROACH:
 CLIMB ON R-353 DAN TO D7.0 DAN, TURN RIGHT TO INTERCEPT R-107 HUE TO D40.5 HUE (MAX IAS 425 km/h), TURN RIGHT TO R-069.0/D14.5 DAN AT 1200 m. JOIN HOLDING PATTERN OR FOLLOW DA NANG TWR INSTRUCTIONS.

ILS RDH 16.0

THR ELEV 7.5

KILOMETRES TO/FM THR RWY 35L



OCA (H)		A	B	C	D
STRAIGHT-IN APCH	CAT I		69 (62)		
	GP INOP		145 (136)		
CIRCLING		310 (301)	420 (411)	490 (481)	720 (711)

GS	km/h	150	200	250	300
FAF-MAPT 4.7 NM (8.7 km)	min:s	3:29	2:37	2:05	1:44
RATE OF DESCENT 5.2% (3.0°)	m/s	2.2	2.9	3.6	4.4

CIRCLING IS ONLY IN THE EAST OF RWY.