

108°00'E 108°15'E 108°30'E

**PHUBAI**  
VOR/DME 115.8  
HUE  
16°24'08"N  
107°42'06"E  
30 m

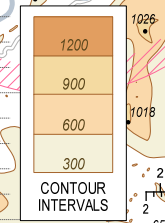
ELEV, ALT, HGT IN METRES  
DIST IN KILOMETRES  
DME DIST (D) IN NM  
BRG ARE MAG  
VAR 1°W

190°  
2350  
1450  
025° 350°  
1200

MSA 46 km  
DAN VORDME

DME REQUIRED

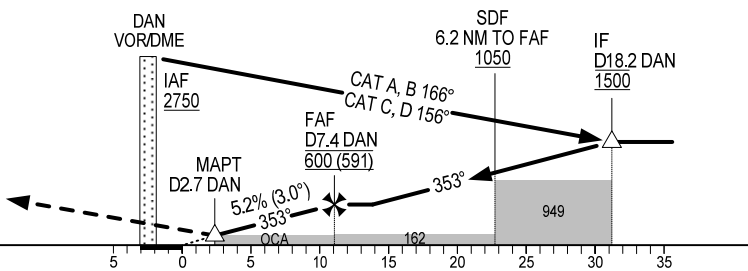
USAGE CONDITION: IN CASE OF MILITARY FLIGHT OPERATION, THIS PROCEDURE IS ONLY USED WHEN HAVING CLOSELY COORDINATED AND AGREED BY MILITARY AIR COMMANDER AT DA NANG AERODROME OR REGIONAL AIR COMMAND CENTRE II.



108°00'E 108°15'E 108°30'E

TRANSITION ALTITUDE 2750

MISSED APPROACH:  
CLIMB ON R-353 DAN TO D7.0 DAN, TURN RIGHT TO INTERCEPT R-107 HUE TO D40.5 HUE (MAX IAS 425 km/h), TURN RIGHT TO R-069.0/D14.5 DAN AT 1200 m. JOIN HOLDING PATTERN OR FOLLOW DA NANG TWR INSTRUCTIONS.



OCA (H)	A	B	C	D
STRAIGHT-IN APCH	145 (136)			
CIRCLING	310 (301)	420 (411)	490 (481)	720 (711)

GS	km/h	150	200	250	300
FAF-MAPT 4.7 NM (8.7 km)	min:s	3:29	2:37	2:05	1:44
RATE OF DESCENT 5.2% (3.0°)	m/s	2.2	2.9	3.6	4.4

CIRCLING IS ONLY IN THE EAST OF RWY.