

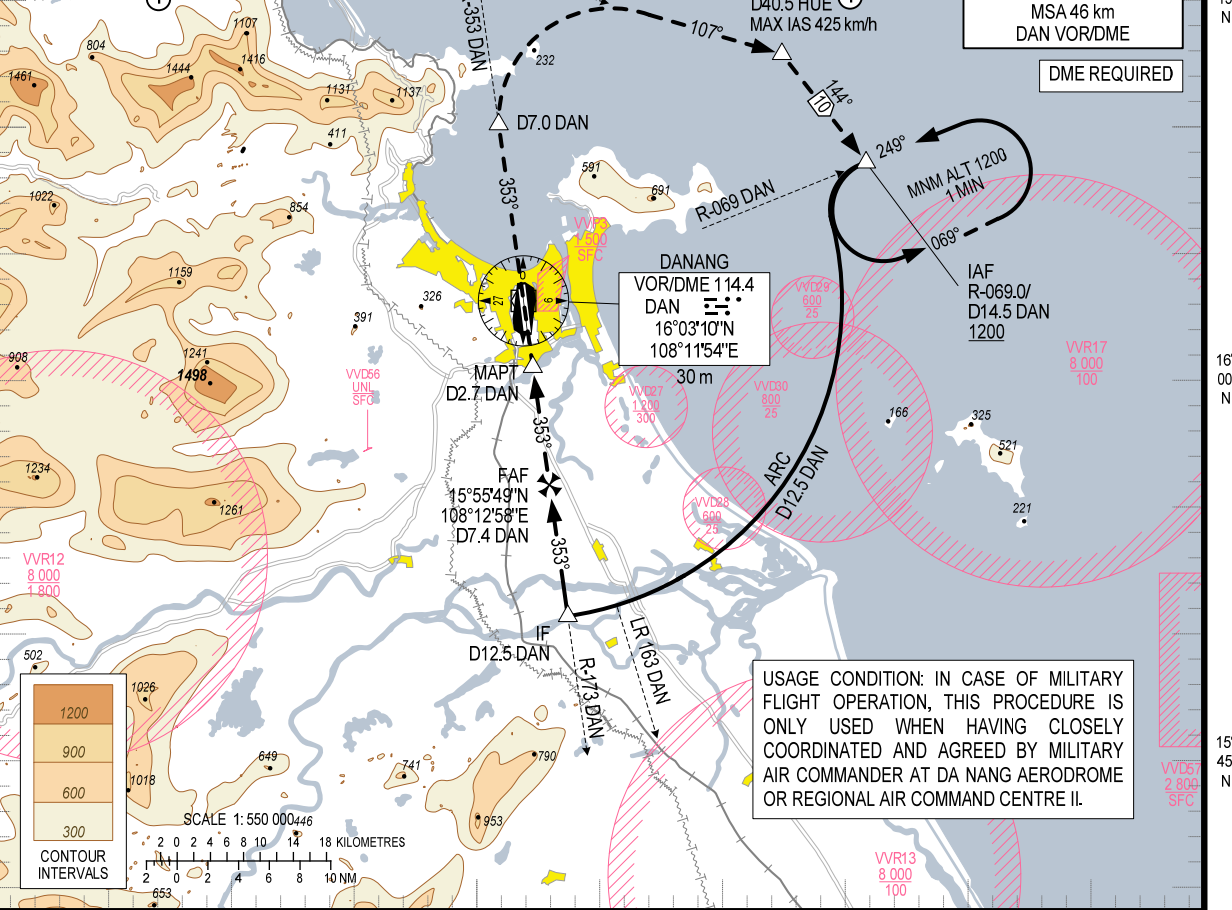
108°00'E 108°15'E 108°30'E

PHUBAI
VOR/DME 115.8
HUE
16°24'08"N
107°42'06"E
30 m

ELEV, ALT, HGT IN METRES
DIST IN KILOMETRES
DME DIST (D) IN NM
BRG ARE MAG
VAR 1°W

MSA 46 km
DAN VOR/DME

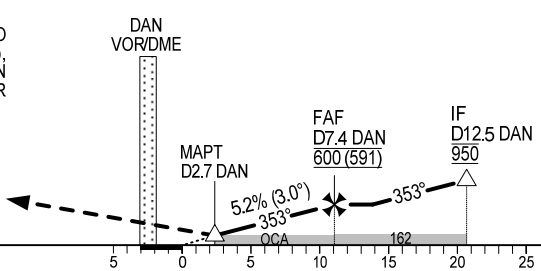
DME REQUIRED



108°00'E 108°15'E 108°30'E

TRANSITION ALTITUDE 2750

MISSED APPROACH:
CLIMB ON R-353 DAN TO D7.0 DAN, TURN RIGHT TO INTERCEPT R-107 HUE TO D40.5 HUE (MAX IAS 425 km/h), TURN RIGHT TO R-069.0/D14.5 DAN AT 1200 m. JOIN HOLDING PATTERN OR FOLLOW DA NANG TWR INSTRUCTIONS.



OCA (H)	A	B	C	D
STRAIGHT-IN APCH	145 (136)			
CIRCLING	310 (301)	420 (411)	490 (481)	720 (711)

GS	km/h	150	200	250	300
FAF-MAPT 4.7 NM (8.7 km)	min:s	3:29	2:37	2:05	1:44
RATE OF DESCENT 5.2% (3.0°)	m/s	2.2	2.9	3.6	4.4

CIRCLING IS ONLY IN THE EAST OF RWY.