

108°00'E 108°15'E 108°30'E

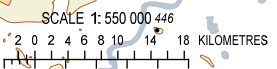
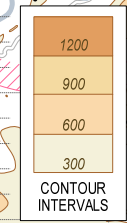
**PHUBAI**  
 VOR/DME 115.8  
 HUE  
 16°24'08"N  
 107°42'06"E  
 30 m

ELEV, ALT, HGT IN METRES  
 DIST IN KILOMETRES  
 DME DIST (D) IN NM  
 BRG ARE MAG  
 VAR 1°W

MSA 46 km  
 DAN VORDME

**DME REQUIRED**

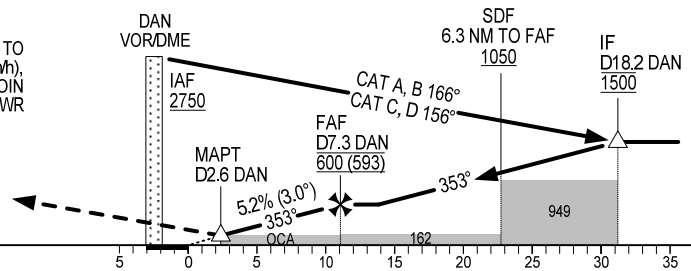
**USAGE CONDITION:** IN CASE OF MILITARY FLIGHT OPERATION, THIS PROCEDURE IS ONLY USED WHEN HAVING CLOSELY COORDINATED AND AGREED BY MILITARY AIR COMMANDER AT DA NANG AERODROME OR REGIONAL AIR COMMAND CENTRE II.



108°00'E 108°15'E 108°30'E

**TRANSITION ALTITUDE 2750**

**MISSED APPROACH:**  
 CLIMB ON R-353 DAN TO D7.0 DAN, TURN RIGHT TO INTERCEPT R-107 HUE TO D40.5 HUE (MAX IAS 425 km/h), TURN RIGHT TO R-069.0/D14.5 DAN AT 1200 m. JOIN HOLDING PATTERN OR FOLLOW DA NANG TWR INSTRUCTIONS.



THR ELEV 7  
 KILOMETRES TO/FM THR RWY 35L

OCA (H)	A	B	C	D
STRAIGHT-IN APCH	145 (136)			
CIRCLING	310 (301)	420 (411)	490 (481)	720 (711)

GS	km/h	150	200	250	300
FAF-MAPT 4.7 NM (8.7 km)	min:s	3:29	2:37	2:05	1:44
RATE OF DESCENT 5.2% (3.0°)	m/s	2.2	2.9	3.6	4.4

CIRCLING IS ONLY IN THE EAST OF RWY.