

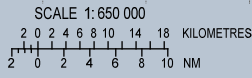
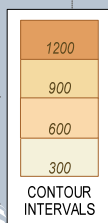
INSTRUMENT APPROACH CHART – ICAO

AERODROME ELEV 9 m
HEIGHTS RELATED TO
THR RWY 17L – ELEV 7 m

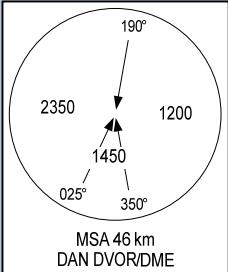
APP 120.45 PRI
125.45 SRY
TWR 118.35 PRI
118.05 SRY

**DA NANG/DA NANG INTL (VVDN)
VOR W RWY 17L**

107°45'E 108°00'E 108°15'E 108°30'E



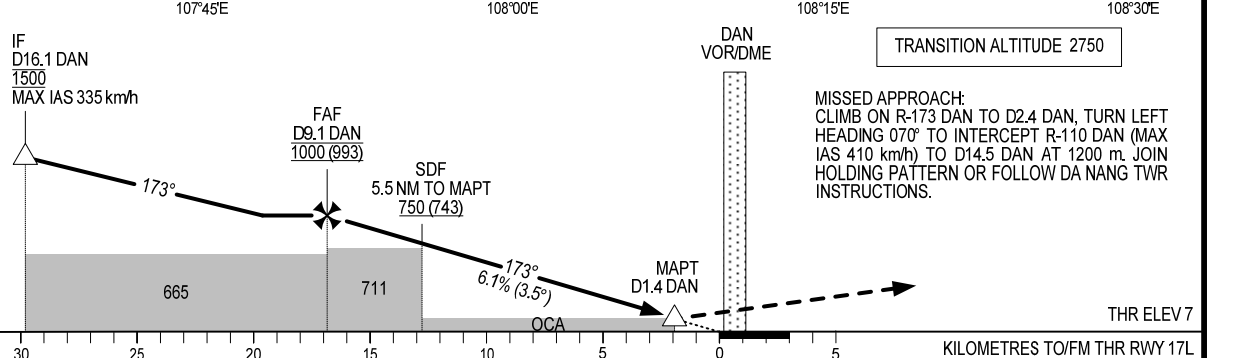
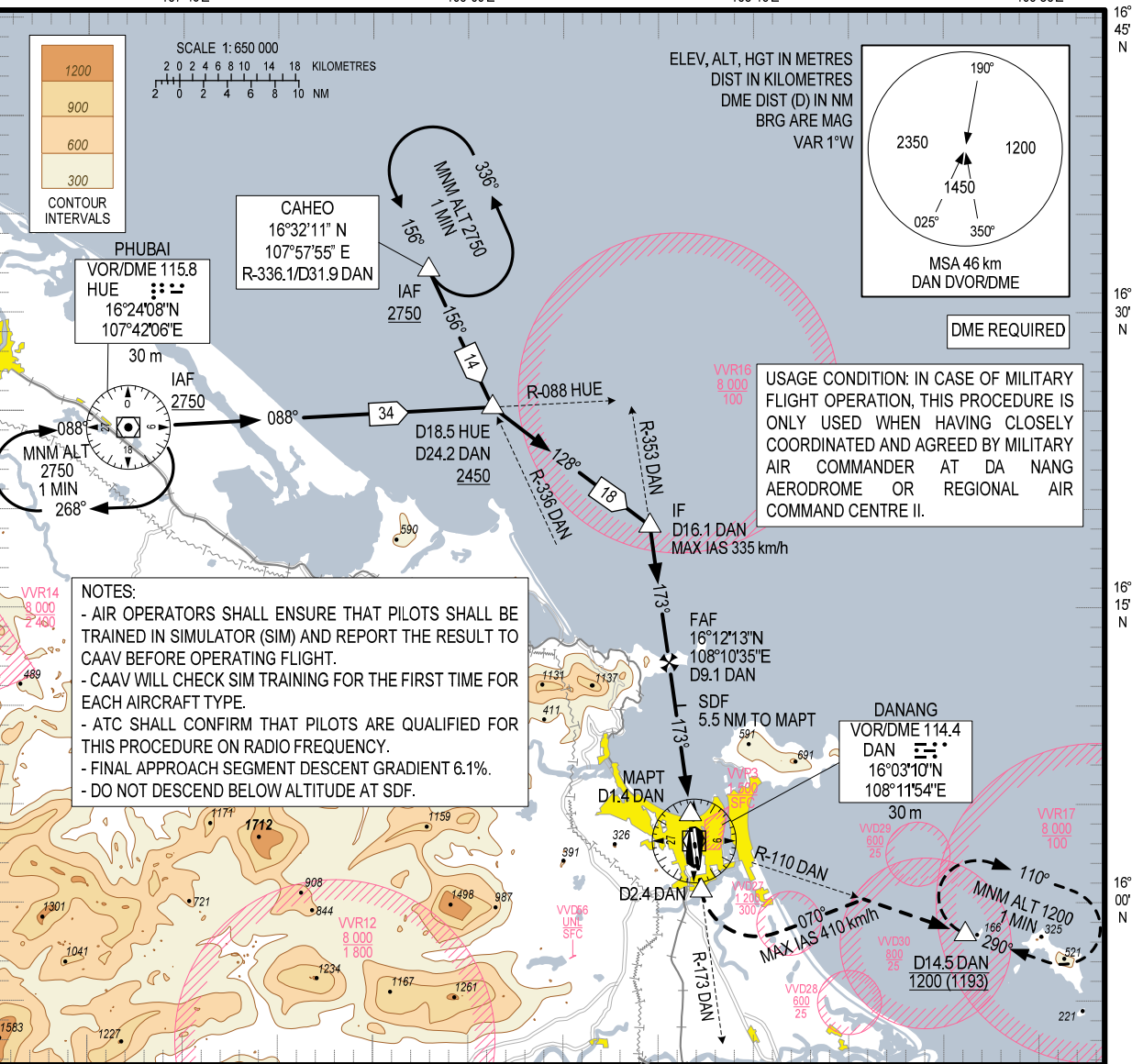
ELEV, ALT, HGT IN METRES
DIST IN KILOMETRES
DME DIST (D) IN NM
BRG ARE MAG
VAR 1°W



DME REQUIRED

USAGE CONDITION: IN CASE OF MILITARY FLIGHT OPERATION, THIS PROCEDURE IS ONLY USED WHEN HAVING CLOSELY COORDINATED AND AGREED BY MILITARY AIR COMMANDER AT DA NANG AERODROME OR REGIONAL AIR COMMAND CENTRE II.

- NOTES:
- AIR OPERATORS SHALL ENSURE THAT PILOTS SHALL BE TRAINED IN SIMULATOR (SIM) AND REPORT THE RESULT TO CAAV BEFORE OPERATING FLIGHT.
 - CAAV WILL CHECK SIM TRAINING FOR THE FIRST TIME FOR EACH AIRCRAFT TYPE.
 - ATC SHALL CONFIRM THAT PILOTS ARE QUALIFIED FOR THIS PROCEDURE ON RADIO FREQUENCY.
 - FINAL APPROACH SEGMENT DESCENT GRADIENT 6.1%.
 - DO NOT DESCEND BELOW ALTITUDE AT SDF.



OCA (H)	A	B	C	D
STRAIGHT-IN APCH	110 (103)			
CIRCLING	310 (301)	420 (411)	490 (481)	720 (711)

GS	km/h	150	200	250	300
FAF-MAPT 7.7 NM (14.3 km)	min:s	5:42	4:17	3:25	2:51
RATE OF DESCENT 6.1% (3.5°)	m/s	2.5	3.4	4.2	5.1

CIRCLING IS ONLY IN THE EAST OF RWY.