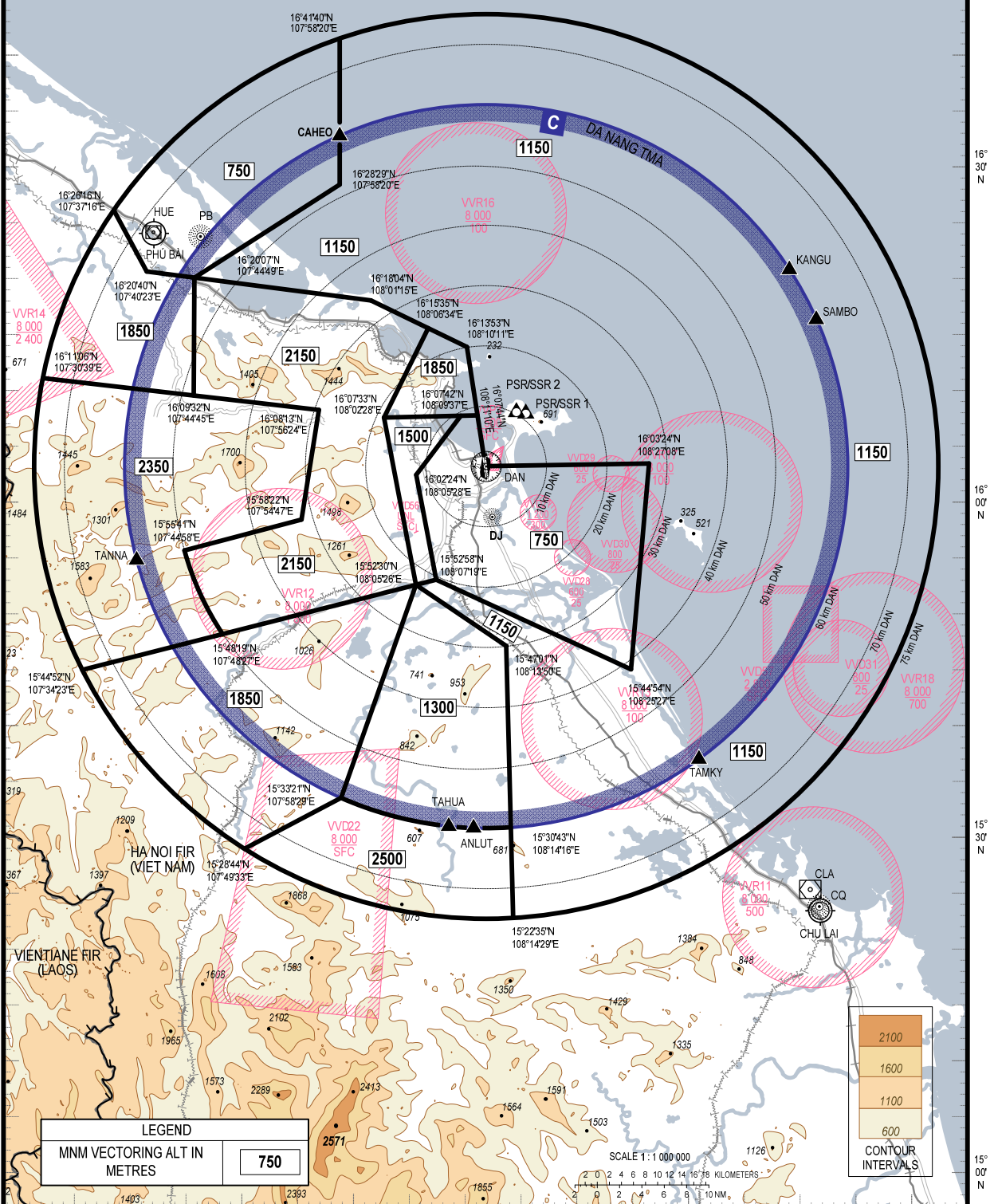


107°30'E 108°00'E 108°30'E 17°00'N 16°30'N 16°00'N 15°30'N 15°00'N

ELEV, ALT IN METRES
VAR 1° W

NOTES:
- CHART ONLY TO BE USED FOR CROSS-CHECKING OF ALTITUDES ASSIGNED WHILE UNDER VECTORED CONTROL.
- LEVELS ASSIGNED BY ATC INCLUDE A CORRECTION FOR LOW TEMPERATURE EFFECT WHEN NECESSARY.

COM FAILURE
- SET TRANSPONDER CODE 7600.
- FOLLOW COM FAILURE PROCEDURE ON RELEVANT SID OR STAR.



LEGEND
MNM VECTORED ALT IN METRES **750**

SCALE 1:1 000 000
KILOMETERS
2 0 2 4 6 8 10 12 14 16 18 20
2 0 2 4 6 8 10 NM

2100
1600
1100
600
CONTOUR INTERVALS