

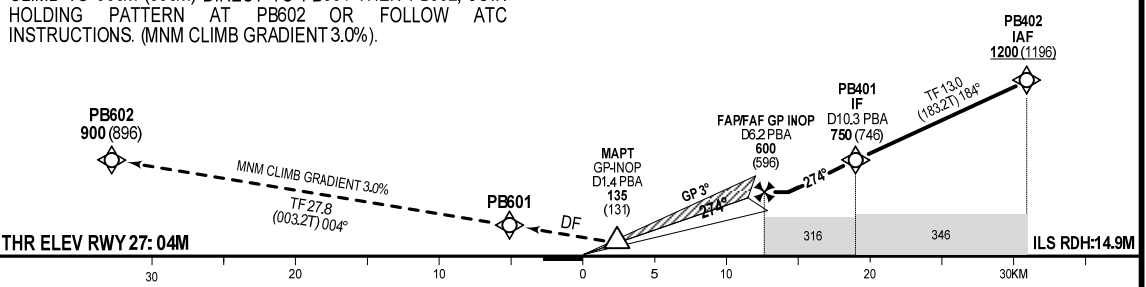
REQUIRE:
- RNP 1 FOR INITIAL APPROACH SEGMENT,
MISSED APPROACH SEGMENT AND MISSED
APPROACH TRANSITION.

NOTE: THIS CHART IS USED FOR STAR RNP 1 (GNSS).

MISSED APPROACH:

CLIMB TO 900M (896M) DIRECT TO PB601 THEN PB602, JOIN HOLDING PATTERN AT PB602 OR FOLLOW ATC INSTRUCTIONS. (MNM CLIMB GRADIENT 3.0%).

TRANSITION ALT: 2750M



OCAH					GS	KMH	150	200	250	300	350	
TYPE OF AIRCRAFT		A	B	C	D	FAF - MAPT = 8.9KM	MIN:S	3:33	2:39	2:07	1:46	1:31
STRAIGHT-IN APPROACH	CAT I	76 (72)	79 (75)	82 (78)	85 (81)	RATE OF DESCENT 3°	M/S	2.2	2.9	3.6	4.4	5.1
	GP INOP	135 (131)				DME (PBA) NM	6.2	5	4	3	2	1.4
CIRCLING		300 (285)		400 (385)		ALT (HGT)	600(596)	489(485)	392(388)	295(291)	198(184)	135(131)

CIRCLING IS ONLY IN THE NORTH OF RUNWAY

FOR DATA TABULATION, SEE VERSO