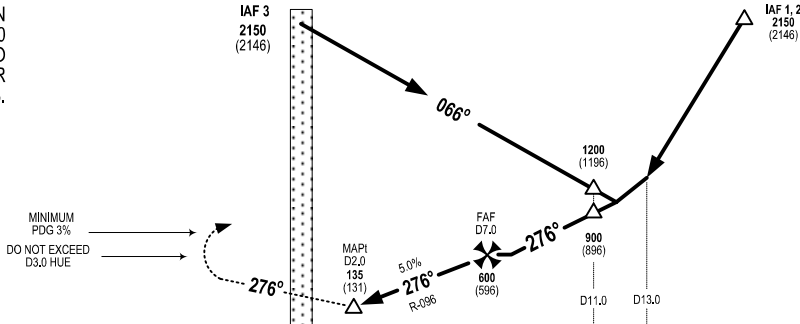


**MISSED APPROACH:**

MAINTAIN R-276 HUE, TURN RIGHT (DO NOT EXCEED D3.0 HUE), CLIMB TO 2150M TO JOIN HOLDING PATTERN OR FOLLOW ATC INSTRUCTIONS. (MINIMUM PDG 3%).

**HUE**

**TRANSITION ALTITUDE: 2750M**



**THR ELEV 27: 04M**

OCA / H					DME	D7.0	D6.0	D5.0	D4.0	D3.0	D2.0	
ACFT CAT	A	B	C	D	ALT (HGT)	600 (596)	508 (504)	415 (411)	323 (319)	230 (226)	135 (131)	
STRAIGHT-IN APPROACH	135 (131)				<b>FAF - MAPt = 9.2KM (5NM)</b>							
CIRCLING	300 (285)		400 (385)		GS	Km/h	148	185	222	260	296	333
					TIME FAF-MAPt	Min:Sec	3:44	3:00	2:30	2:07	1:52	1:32

**CIRCLING ONLY IN THE NORTH OF RWY**