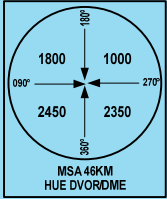


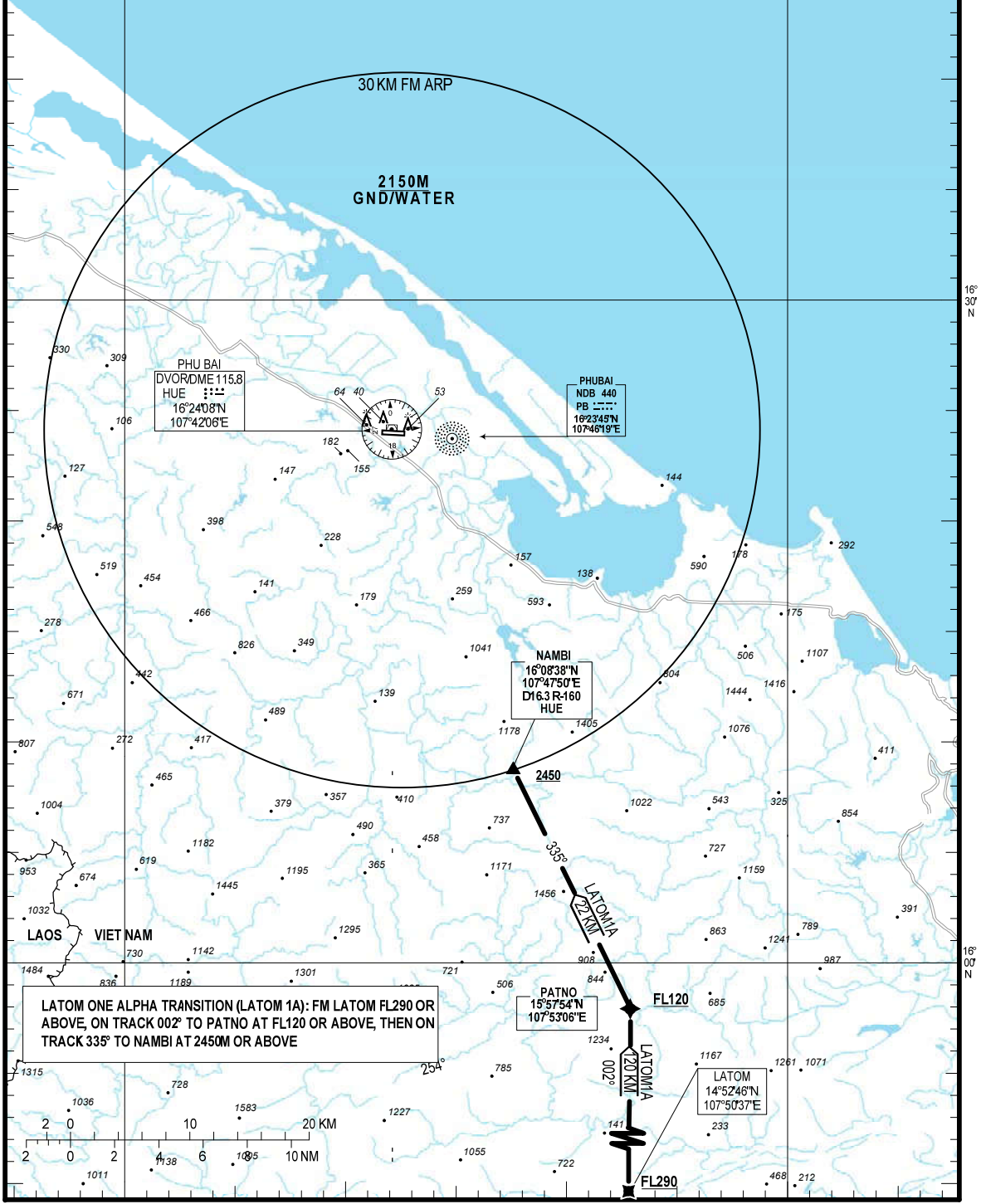
107°30'E

108°00'E



BRG ARE MAG
ELEV, HGT, ALT IN METRES
VAR 1°W

NOTE:
- GNSS OR VOR/DME REQUIRED
- THIS PROCEDURE IS ONLY USED FOR
ARRIVING AIRCRAFT ON Q2 LANDING
AT VVPB.



LATOM ONE ALPHA TRANSITION (LATOM 1A): FM LATOM FL290 OR ABOVE, ON TRACK 002° TO PATNO AT FL120 OR ABOVE, THEN ON TRACK 335° TO NAMBI AT 2450M OR ABOVE