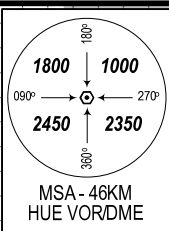
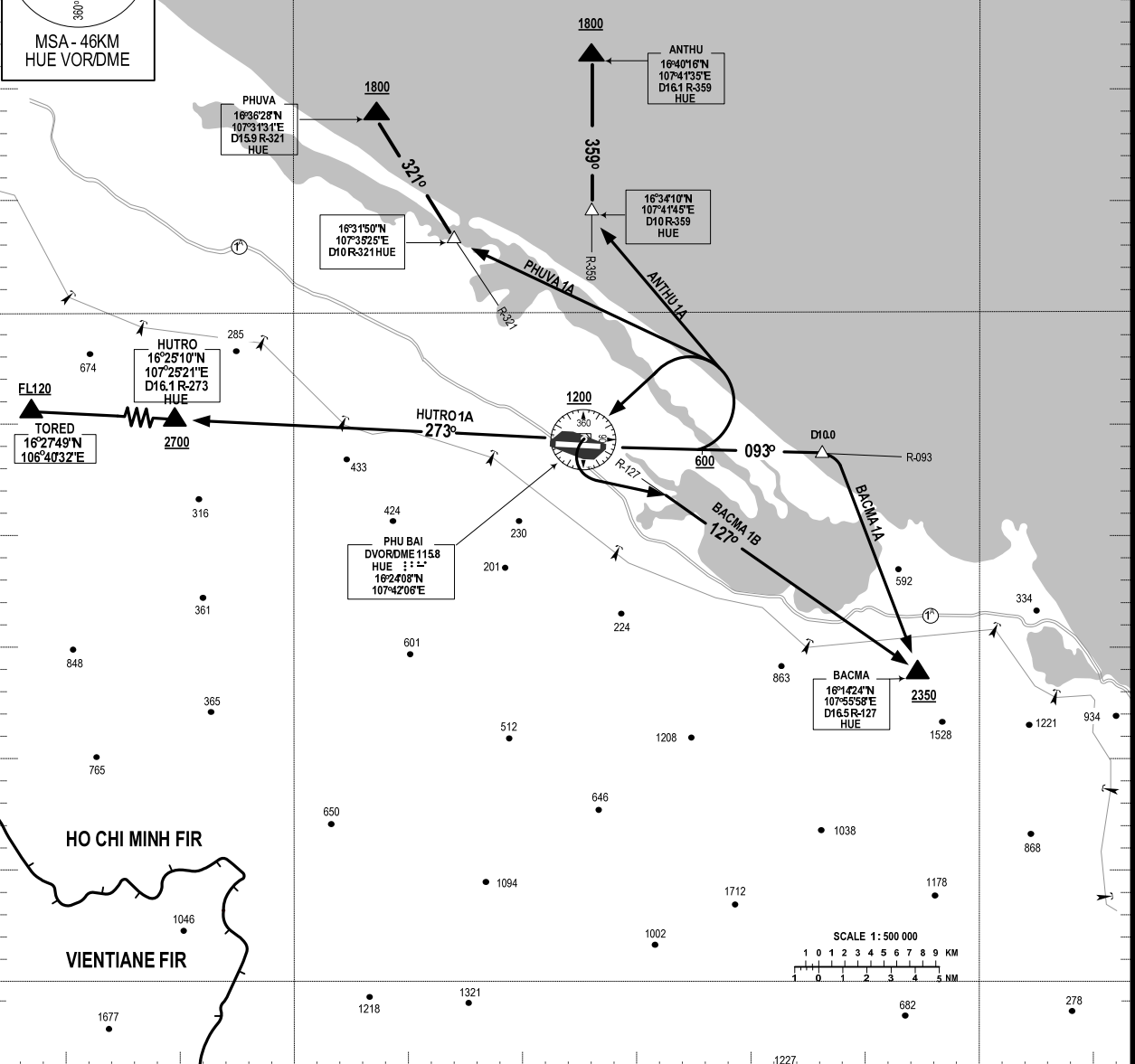


107°30'E

108°00'E



BRG ARE MAG  
ELEV, HGT, ALT IN METRES  
VAR 1°W



RWY 09

1. PHUVA ONE ALPHA DEPARTURE (PHUVA 1A): AFTER DEPARTURE, INTERCEPT R-093 HUE UNTIL REACHING 600M OR ABOVE, TURN LEFT TO INTERCEPT W2 AT D10.0 R-321 HUE, REACH 1800M OR ABOVE AT PHUVA. (MINIMUM PDG 7% UNTIL REACHING 1800M).
2. ANTHU ONE ALPHA DEPARTURE (ANTHU 1A): AFTER DEPARTURE, INTERCEPT R-093 HUE UNTIL REACHING 600M OR ABOVE, TURN LEFT TO INTERCEPT W10 AT D10.0 R-359 HUE, REACH 1800M OR ABOVE AT ANTHU. (MINIMUM PDG 7% UNTIL REACHING 1800M).
3. BACMA ONE ALPHA DEPARTURE (BACMA 1A): AFTER DEPARTURE, INTERCEPT R-093 HUE UNTIL D10.0 HUE, TURN RIGHT REACH 2350M OR ABOVE AT BACMA, INTERCEPT W2 TO DAN. (MINIMUM PDG 7% UNTIL REACHING 2350M).
4. BACMA ONE BRAVO DEPARTURE (BACMA 1B): AFTER DEPARTURE, INTERCEPT R-093 HUE, UNTIL REACHING 600M OR ABOVE, TURN LEFT TO HUE AT 1200M OR ABOVE THEN INTERCEPT R-127 HUE TO BACMA, REACH 2350M OR ABOVE AT BACMA. (MINIMUM PDG 7% UNTIL REACHING 2350M).
5. HUTRO ONE ALPHA DEPARTURE (HUTRO 1A): AFTER DEPARTURE, INTERCEPT R-093 HUE UNTIL REACHING 600M OR ABOVE, TURN LEFT TO HUE AT 1200M OR ABOVE THEN INTERCEPT R-273 HUE TO HUTRO, REACH 2700M OR ABOVE AT HUTRO, REACH FL120 OR ABOVE AT TORED. (MINIMUM PDG 7% UNTIL REACHING 2700M).